



BULOLO DISTRICT

FIVE YEAR DEVELOPMENT PLAN

2013 - 2017



Papua New Guinea
National Government



Morobe Provincial
Government

TABLE OF CONTENTS

FOREWORD AND ACKNOWLEDGEMENT

Map 2 - Morobe Province	6
Map 3 – Bulolo District	7

BULOLO DISTRICT PROFILE 8

- Geography
- District Administration
- History
- Population
- Economy
- Health, Education, Infrastructure Development, and Social Services.

VISION, MISSION STATEMENT & GOALS 10

1. OVERVIEW OF THE PLAN 11

Introduction

Background

Methodology

Scope and Limitations

2. SECTORAL DEVELOPMENT PRIORITIES 13

Social Sector

2.1.1 Education	13
-----------------	----

2.1.2 Health	15
--------------	----

2.1.4 Community Development	16
-----------------------------	----

2.1.5 Culture & Tourism	18
-------------------------	----

2.2 Law & Justice Sector	19
--------------------------	----

2.2.1 Police	19
--------------	----

2.2.2 Correctional Services	20
-----------------------------	----

2.2.3 The Courts Systems	20
--------------------------	----

2.3 Economic Sector	21
---------------------	----

2.3.1 Agriculture & Livestock	21
-------------------------------	----

2.3.2 Forestry and Logging	22
----------------------------	----

2.3.3 Fisheries	22
-----------------	----

2.3.4 Mining	23
--------------	----

2.3.6 Down-Stream Processing	24
------------------------------	----

2.4 Commerce, Trade and Industry	24
----------------------------------	----

2.4.1 Commerce and Trade	24
--------------------------	----

2.4.2 Banking Facilities and Services	25
---------------------------------------	----

2.4.3 General Merchandising	25
-----------------------------	----

2.4.4 Fresh Produce & Marketing	25
---------------------------------	----

2.5 Land Resources Sector	26
---------------------------	----

2.5.1 Environment & Conservation	26
----------------------------------	----

2.5.2 Parks and Reserves	26
--------------------------	----

2.5.3 Land Use Planning	26
-------------------------	----

2.5.4 Town development Plan	27
-----------------------------	----

2.5.5 Customary Land	27
----------------------	----

2.6 Infrastructure Sector	28
---------------------------	----

2.6.1 Roads and Transport	28
---------------------------	----

2.6.2 Bridges (including footbridges)	29
---------------------------------------	----

2.6.3 Airstrips	30
-----------------	----

2.6.4 Housing	30
---------------	----

2.6.6 Communication Facilities	31
--------------------------------	----

2.7 Public Utilities Sector	31
-----------------------------	----

2.7.1 Electricity	31
-------------------	----

2.7.2 Telecommunication Services	31
----------------------------------	----

2.7.3 Postal Services	32
-----------------------	----

2.7.4 Water Supply	32
--------------------	----

2.7.5 Sewerage and Sanitation	33
-------------------------------	----

2.7.6 Cabbage Collection and Disposal	33
---------------------------------------	----



TABLE OF CONTENTS

2.8	District Administration & Local Level Governments	33	4.9	Commerce, Trade and Industry Sector	
2.8.1	District Headquarters	33	4.10	Land Resources Sector	
2.8.2	Sub-Districts	34	4.11	Infrastructure Sector	
2.8.3	Local Level Governments	34	4.12	Public Utilities Sector	
3.	IMPLEMENTATION PLAN	37	4.13	District Administration & Local Level Government Sector	
3.1	Education		5.	COST ESTIMATES 2013-2017	80
3.2	Health		5.1	Education Sector	
3.3	Community Development & Social Welfare Services		5.2	Health Sector	
3.4	Law and Order		5.3	Community Development and Social Welfare Services	
3.5	Culture and Tourism		5.4	Law and Order Sector	
3.6	Agriculture, Livestock & Wildlife		5.5	Culture and Tourism Sector	
3.7	Fisheries		5.6	Agriculture, Livestock & Wildlife	
3.8	Forestry		5.7	Fisheries	
3.9	Commerce, Trade and Industry		5.8	Forestry	
3.10	Land Resources		5.9	Commerce, Trade and Industry Sector	
3.11	Infrastructure Development		5.10	Land Resources Sector	
3.12	Public Utilities		5.11	Infrastructure Sector	
3.13	District Administration and Local Level Governments		5.12	Public Utilities Sector	
4.	THE IMPLEMENTATION SCHEDULE 2013-2017	64	5.13	District Administration & Local Level Government Sector	
4.1	Education Sector		6.	MONITORING, EVALUATION & REDEVELOPMENT	91
4.2	Health Sector		6.1	Monitoring	
4.3	Community Development & Social Welfare Services		6.2	Evaluation	
4.4	Law and Order Sector		6.3	Redevelopment and Redesign	
4.5	Culture and Tourism Sector				
4.6	Agriculture, Livestock and Wildlife				
4.7	Fisheries				
4.8	Forestry				





FOREWORD AND ACKNOWLEDGMENT

Every leader at every level of leadership, either at the political, bureaucratic, business or a village chief at the village level, has a vision of how he/she wants to make a difference in the lives of the people which he/she leads during his/her term in office as their leader. I also have my own dreams about my electorate and how I foresee the welfare and wellbeing of the people of my electorate to be like in the years to come, even well before I have gone.

During my current term in office as their local Member of Parliament, I want to pursue some important projects which will in the long-term have lasting impact in their lives. I don't want to be just another idle Member of Parliament who is only a representative of the people in the highest decision-making forum of the land. Sometimes a leader makes decisions which do not necessarily reflect the people's views and thoughts, but the results will be realized in years to come.

I am, and will always be a practical leader, listening to the wishes of the people, and offering possible solutions through actions that can provide comfort, hope and eventually happiness to them in the long term.

This document, the Bulolo District Five Year Development Plan 2013-2017 therefore outlines the most important activities which I have chosen to pursue during my current term in office to realize that dream.

These lists of projects which cover all the important sectors of development for the district are based on my own personal research and experiences as a citizen of the district, as well as during my previous term as the local Member of Parliament for the electorate. Many programmes not mentioned here have already been developed during my first term in Parliament (2007-2012). And this is a continuation as well as intentions of new projects for the next five years.

At this juncture, let me take this opportunity to firstly acknowledge the author, Mr George Wrondimi, a lecturer at the University of Papua New Guinea for taking his time out to package this document for me and the district in a professional, simple and user friendly format.

I am also grateful to the Bulolo District Administrator, his administration and staff, as well as other partners and stakeholders like the Morobe Mining Joint Ventures for their invaluable input in various ways towards the successful completion of this Plan.

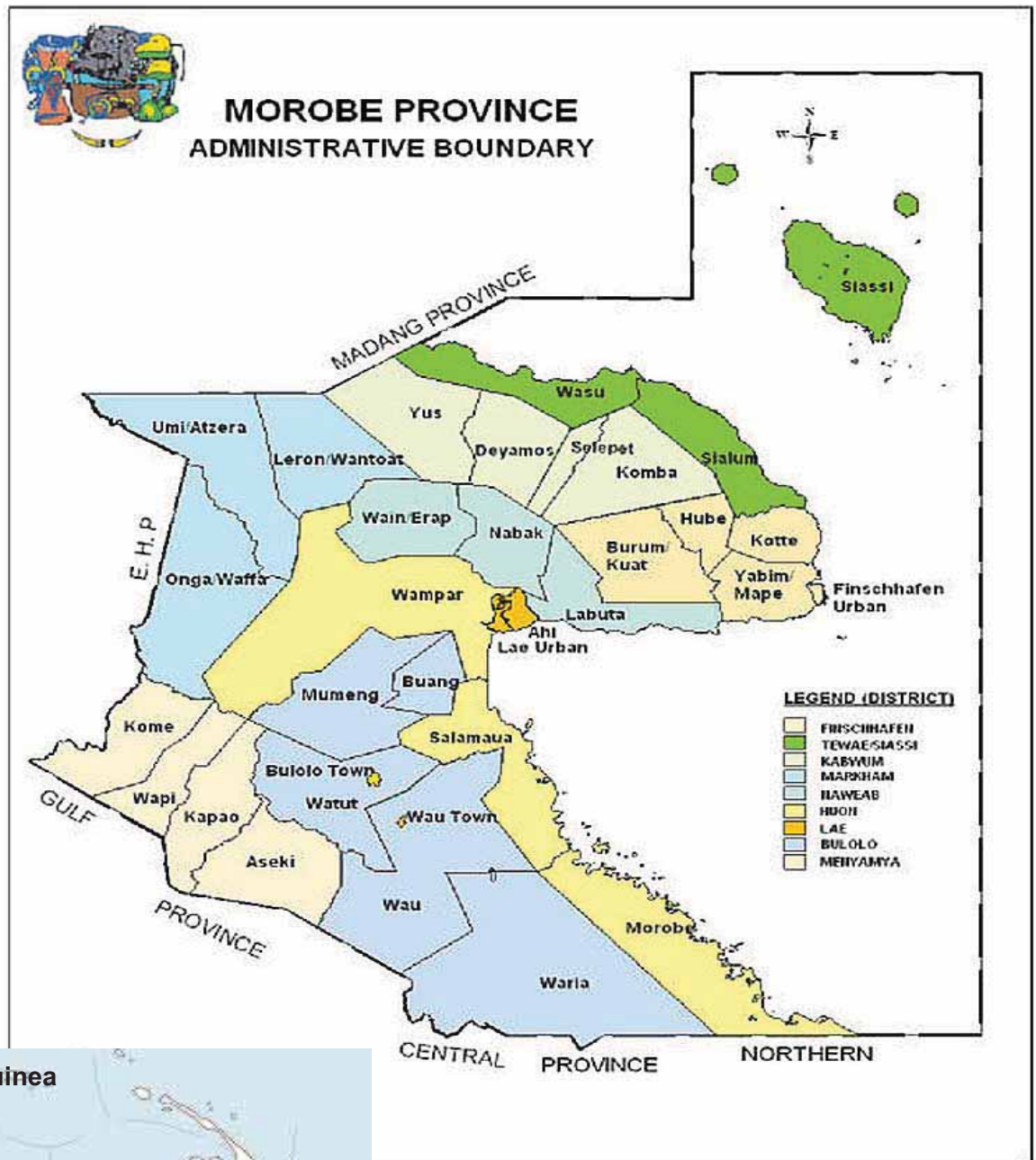
And I am very confident that together with the co-operation and support of the Joint District Planning and Budget Priorities Committee, the District Administration, my Electoral Officers, the Ward Councillors, and other relevant partners and stakeholders, including the Morobe Provincial Government, Churches, NGOs and the Private Sector (Morobe Mining, PNG Forest Products etc.), this development plan will be fully implemented over the next five years to realize the expected outcomes for the people of the district.

I am also equally confident that the selected projects will have real impact on the overall progress and development in the district, thus contributing immensely to improved quality of lives for the people in the electorate during the next ten years and beyond.

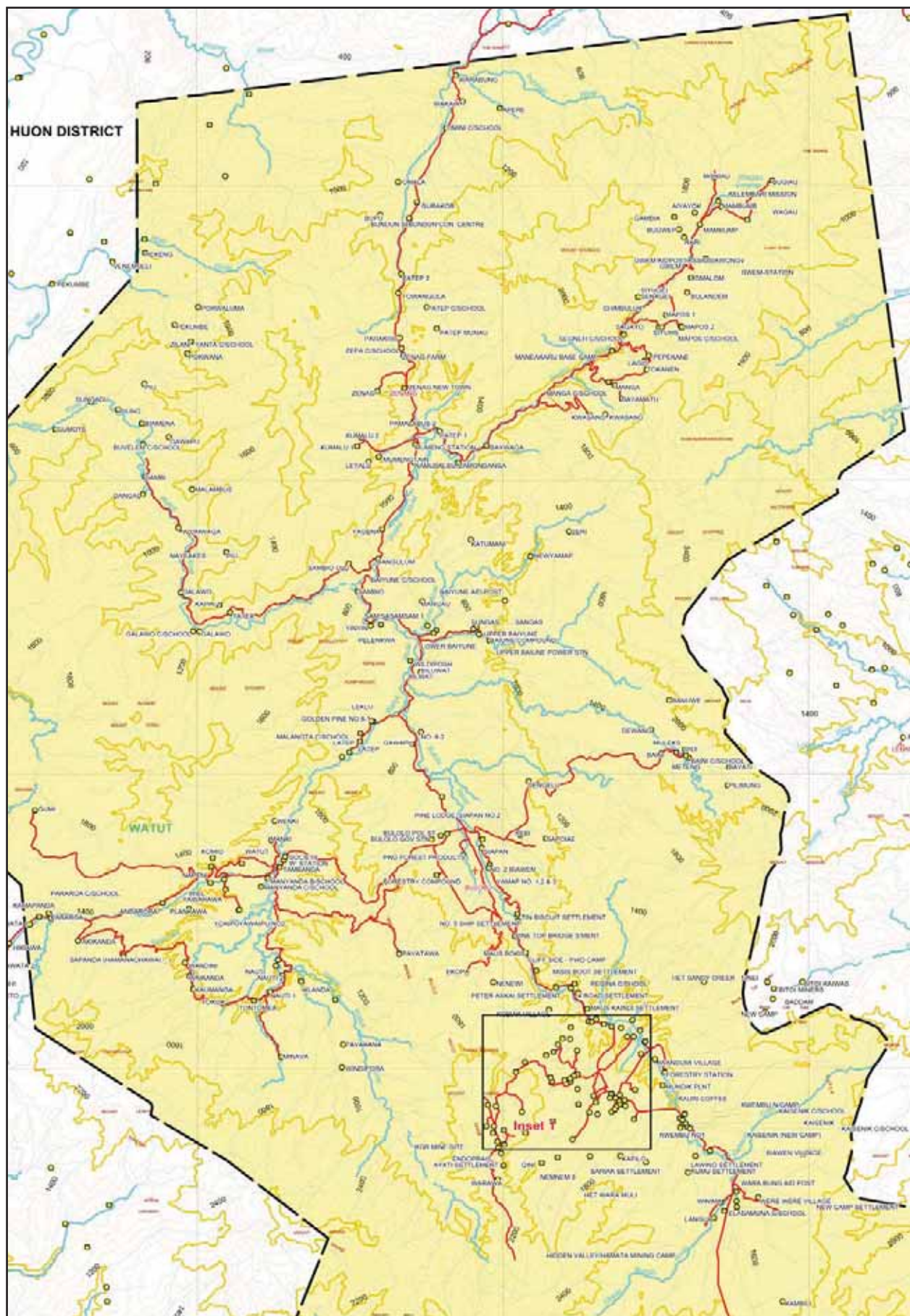
HON. SAM BASIL, MP
Member for Bulolo, and Chairman of Bulolo Joint District
Planning & Budget Priorities Committee

Oh God,
Give me the courage to change the things I can,
the strength to accept things I can't, the under-
standing to know the differences and the wisdom
to plan for the future - Sam Basil
22nd February 2014

Morobe Province with its Districts and Sub-Districts



Bulolo District



BULOLO DISTRICT PROFILE

Geography

Bulolo District is one of the nine districts or electorates of Morobe Province in Papua New Guinea, and its capital is also named as Bulolo. It is the largest district in the province and covers a land mass of 5,000 square kilometres. The District covers the Watut, Zenag and Bulolo valleys in the north, and Waria Valley, Kuper Range and Kodama Range in the south. Average annual rainfall ranges between 1600 mm in the Zenag Valley, to over 2700 mm in the Kuper Range.

The dry season is long in the entire district, and the altitude varies from sea level to over 2800m in the Kuper Range region.

Bulolo District Administration Building



District Administration

Currently Bulolo still remains as the Capital of the district with District Headquarters as well as the Central Business District (CBD) located in the township. However, plans are already in place to split the district with two separate headquarters to be relocated at Mumeng to the North and Wau to the south-east in future. The District also has two sub-districts with their respective townships which are Wau and Mumeng.

There are currently six Local Level Governments (LLGs) in the district which include; the Buang LLG, Watut, Waria, Mumeng, Wau/Bulolo Urban, and Wau Rural Local Level Governments. Five of these are rural LLGs while Wau/Bulolo is the only urban based Local Level Government in the district, with total of 110 Wards (both urban and rural ward areas).

History

Historically, Bulolo was once an important gold dredging centre in the former Territory of New Guinea. It is situated along the Bulolo River which is one of the many tributaries of the great Markham River. The town is served by the Bulolo airstrip which was also built in 1930 together with the township. It also has one of the oldest roads in the province connecting it to the provincial capital Lae, and was built after the Second World War.

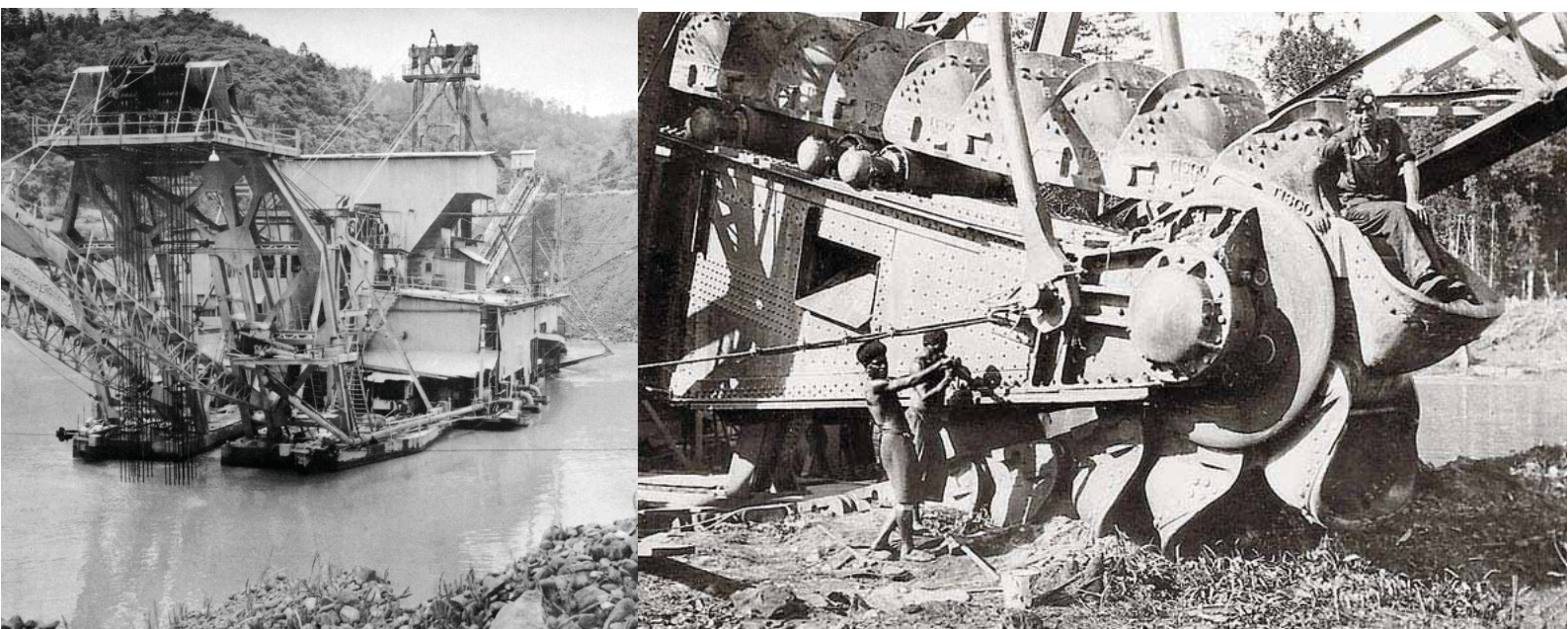
Dredging for gold began on the 21st March 1932 with the whole barge (No.1 dredge) of 1,100 ton transported to the field in pieces by air from Lae. A total of eight dredges were constructed and operated in the

seven years period, the last one going into operation in 1939. Dredging operations were interrupted by the Second World War in 1941, and resumed six years later in 1947.

Gold production in 1952 alone amounted to 122,035 ounces, valued at 1,311,241 pounds, and constituted 77 % of the gold produced in the then, (Territory of New Guinea) in that year. As the gold petered out the dredges were abandoned and can still be found along the Bulolo river bed today.

Apart from gold mining, Bulolo was also the headquarters of a company formed to exploit the pine forest that grew naturally in the valley. And in conjunction with the milling of the timber, an extensive scheme of re-afforestation was undertaken to ensure perpetuity of supplies.

As a result of those early economic activities, Bulolo Township was one of the first to have been connected by road to Lae city by a vehicular road via Bulolo and Markham River valleys in the early days after the war.



One of Bulolo's Gold Dredging Machines of the 1930s

Population

The total population of the district or electorate at 2010 national population census was 102,188 persons. At the current growth rate of 2.8 percent, the total population of the district is projected to hit the 200,000 mark by the year 2030.

The highest population density in the 2000 population census is in the Zenag Valley with 80 persons per square kilometre. The Mainyanda area in the Upper Watut Valley had a density of 46 persons per square kilometre, while the Wau area had 24 persons per square kilometre. All other areas in the district were recorded as having low densities with an average of 15 persons per square kilometre.

Interestingly, the population of upper Watut alone increased by 4.6% between 1980 and 1990 and can be attributed to the movement of people towards alluvial mining and other opportunities in economic and social services.

Economy

Unlike other districts in the province, and the nation for that matter, the foundation for Bulolo's economic development was laid by the mining activities which took place since the early 1930s. After a quiet period of three decades between the 1960s-1990s, a number of new world class mines like Wafi and Hidden Valley Mines began operation in the district.

Aside from mining and from a broad economic perspective, the overall economy of the district is driven by the Traditional/Subsistence and Cash Economy, both working side by side. The former supports approximately 90% of the district's population. The general economic trends show that cash crop production has been skilfully integrated with food crop production. The most important agriculture crops produced in the district are coffee and fresh vegetables.

Poultry farming is also very common throughout the district, especially in the Mumeng sub-district, while alluvial mining activities are continuing in the most parts of the district, including Wau, Garaina, Waria and Watut areas.

Health, Education, Infrastructure Development and Social Services

Bulolo is perhaps the largest and most difficult district in Morobe Province due to its large land mass and population. The rugged terrains and mountainous topography has made accessibility and delivery of services very difficult for the services providers over the years. It has been one of the major contributing factors to lack of progress and development in many rural parts of the district since independence.

Coupled with the increasing population, deteriorating infrastructure, and higher demand for goods and services like health, education, law and order, and economic spin-off activities, the district is now at the cross road. It can either remain stagnant and therefore drag its people behind the rest of the province and country or leap forward and create new opportunities and challenges for them to transform their lives out of the brims of potential impoverished situations in the next twenty years and beyond.

The Bulolo District Five Year Development Plan 2013-2017 provides a medium term framework which if fully and effectively implemented, can transform the District into a vibrant community of active citizens working together to eventually improve the quality of lives for all in the years ahead.

VISION, MISSION AND GOALS

VISION

To realize a healthy, wealthy and prosperous district for all through creation of employment and business opportunities, social protection, and improvement in infrastructure and basic social and economic services throughout the district.

MISSION

Continuation and completion of existing service improvement programmes as well as initiating additional new programmes and services based on the people's needs during the next five years.

GOALS

- Goal 1: Completion of the existing district improvement programmes and services
- Goal 2: Identify and initiate additional new programmes and services based on the needs analysis of the district.
- Goal 3: Develop programmes and services which are aimed at improving the overall quality of life for all people in Bulolo District.

OVERVIEW OF THE PLAN

1.1 Introduction

The Bulolo District Five Year Development Plan 2013-2017 provides the blueprint for the delivery of basic development programmes and services based on the Member's own vision, mission and goals during his current term in office.

During his previous term as the member for the electorate, he has worked hard to identify and compile a wide ranging list of needs for the district. This document thus reflects some of the basic as well as developmental and social services needs of the people which have not been adequately addressed by his predecessors in the past.

The Plan from the outset exposes some of the real economic and social issues encountered in Bulolo District, and at the same time provides strategies to enable the Member and relevant change agencies to address those issues in a concerted effort as documented.

In more specific terms, the Plan actually provide a more detailed representation of some of the major development projects for Bulolo District which have also been listed in the Morobe Provincial Integrated Development Plan 2013-2017, as well as the Morobe Provincial Administration Corporate Plan 2013-2017.

For example the Growth Centre Programmes which was introduced in the last MPG Strategic Development Plan 2008-2012 has been captured in this plan as Commercial Centre Development Projects. The Bulolo District will aim to roll out this important development programme in the next five years under this plan.

Furthermore, the MPG Policy Goal 1, Physical Infrastructure Development, is one of the key priority areas of the BDFDP 2013-2017 as well. In fact all the six Policy Goals of MPG as outlined in Volume One (page 3) of the Morobe Provincial Integrated Development Plan 2013-2017 are well catered for in this plan.

The BDFDP when fully implemented will enable increased access to basic infrastructure and social services, provide conducive environment for business and employment opportunities, and allow for equitable mobilization and redistribution of the district resources and wealth, which will eventually contribute to the overall improvement in the quality of life for the people in the district from 2017 and beyond.

1.2 Background

This document has been produced based on the Member, Hon. Sam Basil's own intentions as to how he plans to represent his voters in an effective and more practical way during his current term as their elected leader.

His visions and intentions are captures in this plan so that they don't just come and go like dream in the night. In that way the implementers and stakeholders can remain focus on what he intends to do in terms of development projects for the electorate in the next five years.

The BDFDP is the sole initiative of the Member, Hon. Sam Basil, which may not fully represent the views and wishes of other existing plans and programmes that may have already been produced in the past for the district, including those that have been developed by the Bulolo District Administration.

It therefore expected that the document will form the basis of the district's overall development plans and programmes for the electorate during the five year period 2013-2017 from the Member's Desk. Future plans for the district will be based on the successes and failure stories from this initial plan.

1.3 Methodology

The information obtained for the BDFDP 2013-2017 were from three main sources, which included verbal discussions and direct inputs from the Member, Hon. Sam Basil. Secondly, from the existing literature such as the Morobe Provincial Integrated Development Plan 2013-2017, the Morobe Provincial Administration Corporate Plan 2013-2017, and the Draft Bulolo District Integrated Development Plan 2013-2017.

And the third source of information was from a site visit to the District by the Member and his team wherein verbal discussions and consultations were held with the district administration as well as with other relevant partners and stakeholders.

During the initial discussions, the author spent almost two hours with the Member in his office premises to obtain much of the information. Subsequent meetings and follow-up discussions on the draft plan enabled clarification and fine-tuning of the document before it was finalized.

The author also used his past experiences of developing similar plans (e.g. Maprik District Five Year Plan 2005-2009 and others) to formulate this plan.

1.4 Scope and Limitations

Despite the limitations of not having wider consultations with all the stakeholders in the district such as the LLGs, NGOs and Churches, the BDFDP is a unique product that contains what the people's leader envisage for the district in the coming years.

The issues and needs highlighted and strategized are not just mere overnight dreams, but are significant projections of the future welfare and wellbeing of the people in the district.

In his wisdom and thorough knowledge of the district, the Member has outlined a very detailed list of development programmes and services in the document.

The Plan covers issues and needs relating to health and education, basic infrastructure and social welfare services such as water supply and electricity, community development, roads and bridges, economic and business opportunities, agriculture & livestock, environmental issues, law & order, and many more as presented in the ensuing chapters.

Whilst he admits that not all the issues and concern as well as the people's needs can be fully addressed in a short period of five years, he had given priority to the most important development programmes and needs which have the potential to make impact on the wider population in the various parts of the district.

The most significant coverage for the first time in this document is the emphasis given to improve and increase the capacities of the Local Level Governments (LLG) so that they become not passive, but proactive development partners in the delivery of services at the village and community levels.

The Member also has plans for improved level of performance at the sub-district level by up-scaling the administrative and operational capacities of the three sub-districts, namely Mumeng, Wau and of course Bulolo.

In that context the member plans to fully develop the three sub-districts as Satellite Towns in the form of Growth and Commercial Centres empowered with all the major facilities and services such as telecommunication towers, supermarket, postal services, banking services, as well as improvements to the health, education and social welfare programmes and services which will be based at the sub-district levels.

In addition, this plan also covers the Member's intention to convert Buang, Watut, Biaru and Garaina into sub-district and growth centres. The member also has plans to split Bulolo Electorate as per the Boundaries Commission Report into two districts which will affect Huon Gulf and Menyamyra Districts.

These are some of the many programmes and services covered in this document which he plans to implement in his current term as the Member for Bulolo.

SECTORAL DEVELOPMENT PRIORITIES

This chapter of the BDFDP 2013-2017 outlines the list of activities, programmes or projects that are already being implemented and ongoing (Current Status), and the new activities yet to be commenced during the next five years (Future Activities). They are arranged under each of the sectors in order to ease reference by all the relevant partners and stakeholders, which include potential donor agencies.

2.1.1 Education

a. Current Status

- i) The District commenced late in the 1995 Education Reforms, hence the District has only one secondary school without bridging High Schools to capture students.
- ii) Parts of the District accessible by airplanes and by walking hence problems with teacher retention and commitment
- iii) Three vehicles purchased for the education division in the district and currently being used by the relevant education officers, including the Quality Assessment Officer



- iv) Committed K200, 000 annually to Balob Teacher's College Improvement/ Operational Programme, to continue to enable teacher trainee space for Bulolo students.
- v) Bulolo came top at the grade six primary education level compared to other districts in Morobe Province in 2013.
- vi) This can be attributed to the Member's commitment of resources and infrastructure development in education sector in his previous five year term.

b. Future Activities (2013-2017)

- i. K1.2m allocated for teacher training programme at all levels in five years
- ii. Student Twinning Sponsorship
- iii. Twinning Sponsorship of 20 students annually to Balob Teacher's College at the rate of K150, 000 per year. More trained teachers from the locality have the advantage of being retained at their respective communities, especially in the most remote areas where it is difficult to attract teachers from outside.
- iv. Continuous support to 110 students (one per ward) to attend Bulolo Technical School for skills training
- v. Regular screening, selection and monitoring of the sponsorship by the district education officers
- vi. Replacement of the current fleet of three vehicles after three years in 2015.
- vii. Upgrading of primary school at Watut LLG Station as High School
- viii. Restoration of Katherine Lehman School as Agricultural School
- ix. Establishment of UPNG Open College and Sub-centres at LLG Stations
- i) Maintenance of Grace Memorial Secondary High School by the MPG at the cost of K200,000 under the Special Support Grant
- ii) Extension of Bulolo Technical College at the cost of K1.8m funding by the MPG and the Department of National Planning and Monitoring
- iii) Construction of the Garaina High School at the cost of K1.8m. by the MPG
- iv) Construction of new High School at Baiyune by MPG at the cost of K1.m under the Special Support Grant.
- v) Maintenance of Bulolo Vocational School by MPG at the cost K2.m under the Special Support Grant.
- vi) Construct and upgrade Buang High School to Technical Secondary School at the cost of K1.8m funding by the MPG and the Dept. of National Planning and Monitoring

2.1.2 Health

a. Current Status

- i) There are two Health Centres at Wau and Bulolo and other Sub Health Centres and Aidposts (Community Health Posts)
- ii) Supplied Ambulances to Watut, Buang, Wau Rural, Waria, Mumeng LLGs, and Bulolo Health Centre respectively and will be re-fleeted after three years
- iii) Three containers of donated wheelchairs, bedding, crutches, etc. delivered
- iv) Allocated K350, 000 for 6,000 glasses under major eye operation programme due to prevalence of cataracts and eye problems affecting people.

b. Future Activities (2013-2017)

- i. Recruitment and Training of 1 Village Health Volunteer for each LLG
- ii. recruitment and training of Village Birth Attendant for all wards
- iii. Continued support for Mobile Health Programme, including disbursement of medical supplies and two personnel each to Mumeng, Buang, Watut and Wau Rural Local Level Governments.
- iv. Provide vehicles for health related work in Buang, Mumeng, Watut Rural, Wau Rural & outskirts of Wau/Mumeng townships
- v. Rehabilitation of health centres in Wau, Mumeng and Bulolo and equip them with X- ray Machines, Sterilizers, and Bio-Chemistry machines.



- vi. Initiate sponsorship of Private Doctors if public health doctors are not available to be based in either Bulolo or Wau townships to offer consultations and treatment of patients. The cost will be subsidized by the district.
- vii. Roll out major eye operation programme in the district, including 1000 glass per LLG totalling 6,000 glasses overall. The project will also include diagnosis and operation in Wau Town (including Wau Rural LLG); Bulolo Town (including Watut LLG); Garaina (Waria LLG) and Mumeng Town (Buang and Mumeng LLG).
- viii. Provide support to TB & HIV/AIDS Programme by the National Aids Council.
- ix. A population based studies on TB & HIV/AIDS to be conducted to determine the actual population infected an affected by the two killer diseases
- x. Installation of X-ray for TB cases as well as TB Test kits and treatment
- xi. Establishment of Voluntary Counselling and Testing Centre at Bulolo and Wau and acquisition of HIV/AIDS kits and treatment supplies
- xii. Stockpile adequate supplies for TB & HIV/AIDS medication

- xiii. Support NGOs and relevant organisations to conduct awareness programmes on TB & HIV/AIDS in consultation with the National Aids Council
- xiv. Establish St John Services for ambulance services, first aid and emergency
- xv. Recruitment of a team of health workers comprising retired HEOs, two nurses and two drivers to man and operate the districts mobile Health Programme.
- xvi. Installation of Morgues to the three health centres (Wau, Mumeng and Buang), as well as to LLGs that have access to adequate power supply.
- xvii. Supply of Ambulances to LLGs and re-fleet after three years.
- xviii. Upgrade the Bulolo Health Centre to Rural Hospital standard by the MPG and NDoH at the cost k1.m under the SSG through the MMJV
- xix. Maintenance of the Wau Health Centre by the MPG at the cost of K300, 000 also under the MMJV's SSG programme.

2.1.3 Community Development and Social Welfare Services

a. Current Status

- i) This sector requires coordination and upgrade to enable improved quality of life.
- ii) Various programmes and activities are already in place and needed to be properly co-ordinated and made explicit for public awareness and involvement.

b. Future Activities (2013-2017)

- i. Formation of Youth, Women, Church, Sports Groups and their District respective Associations
- ii. Formation of Women in Business Association and District Council of Women
- iii. Formation of an Association for Persons With Disabilities
- iv. Continue the programme of purchasing of 500 Sewing Machines for women, provide training then distribution of the sewing machines
- v. Roll out of Civil Registration, Census and Common Roll Updates and Customary Land Registration through Ward Recorders
- vi. Support Women in Small-Scale Business activities and training programmes
- vii. Recruitment of Welfare Officers under the Lukautim Pikinini Act
- viii. Political Awareness and Education through Integrity of Political Parties and Candidates Commission (IPPCC) and PNG Electoral Commission (PNGEC).
- x. District Sports Council to coordinate all sports programs including training , coaching tournaments at Village, Ward, LLG and District level
- xi. Establishment of National Volunteer Service Scheme with a Coordinator
- xii. Establish Church Partnership Program to coordinate education, health training, relief aviation services and social programs of churches
- xiii. Community Development Office to coordinate various sports and recreational programs at Ward and LLG levels to connect to Bulolo and Wau Towns

- xvi. Recruitment of Welfare Officers under the Lukautim Pikinini Act
- xvii. Political Awareness and Education through Integrity of Political Parties and
- xviii. Candidates Commission (IPPCC) and PNG Electoral Commission (PNGEC).
- xix. District Sports Council to coordinate all sports programs including training , coaching, tournaments at Village, Ward, LLG and District level
- xx. Establishment of National Volunteer Service Scheme with a Coordinator
- xxi. Establish Church Partnership Program to coordinate education, health training, relief aviation services and social programs of churches



- xxii. Community Development Office to coordinate various sports and recreational programs at Ward and LLG levels to connect to Bulolo and Wau Towns
- xxii. Provide training for women and youth in agriculture, food processing, sewing and honey bee farming
- xxiii. Instigate Social Protection Programmes for the Elderly 60 years and over with an initial support of K200 per person per annum or K50 per quarter
- xxiv. Also instigate a Community Micro Credit Scheme for village and community groups in the district in the next five years.
- xxv. Construct Community Hall as Meeting and Resource Centres at LLG Stations

2.1.4 Culture & Tourism

a) Current Status

- i) Bulolo District has history in establishment of towns (Wau and Bulolo), aviation, gold mining, forestry, coffee, tea, banking and business and sports such as rugby league.
- ii) Like other districts and provinces in the country, Bulolo Electorate is also rich with traditions and cultures which are still recognized, valued and practiced as a way of life which had been passed on from generations to generations.
- iii) Inevitably, foreign cultures and traditions have penetrated into the district through the process of modernization. The member plans to instigate ways and means to preserve and protect what originally belongs to the district that matters most use ful and beneficial to the people in this modern era.

b) Future Activities (2013-2017)

- i) Establish a Cultural Centre to act as Museum, Bookshop, Tourism Information Centre and office to host culture, agriculture and other festivals
- ii) Encourage and stage Annual Cultural, Agricultural and Music Festivals on rotation al basis in the three main sub-districts at the cost of K120, 000.



- iii) Declare iconic structures such as Barge, Anglican Church, Town Hall, Scouts Hall, Mining Tenements as National Heritage sites
- iv) Provide funding for increased tourism activities in the district
- v) Development and Launching of District Tourism Development and Marketing Plan
- vi) Product Development including radio , rest house, emergency plan and the marketing of Black Cat Trail and Bulldog Track and general tourism
- vii) Recruitment of BDO Culture and Tourism and establishment of Bulolo Tourism Committee in association with the Chamber of Commerce and Agriculture Society.

2.2 Law, Order and Justice Sector - Police

a. Current Status

- i) Eight vehicles already purchased and delivered to Wau, Mumeng and Bulolo town, Buang and Watut LLGS, but are aging and needed to be replaced.

b. Future Activities (2013-2017)

- i) Recruitment and Training of ten (10) police reservist per LLG for replacement of those who are leaving the force and refresher courses for those remaining
- ii) Replacement of aging vehicles to cover Mumeng LLG, Buang LLG, Watut LLG, Wau Rural LLG, Waria LLG, Wau police station, Bulolo police station, Mumeng police station, and for hot spots at Wau and Bulolo Markets. A total of ten new police vehicles at a cost of K1.5m.
- iii) Establish new police stations at Buang, Watut, Biaru and Garaina together with a ten-man police barracks for each police station.
- iv) Equip police personnel with firearms and ammunition for every vehicle purchased and police stations built
- v) Improve operational capacity of Police Prosecution Unit at Wau and Bulolo, including purchasing of a new vehicles



- vi) Develop Liquor Consumption and Sale Policy and enforcement
- vii) Develop Illicit Drugs and Illegal Brewing Control Policy and enforcement
- viii) Installation of Radio Communication System for all LLG police stations, vehicles and Bulolo Mobile Squad 15.
- ix) Construction of Barracks for Mobile 15 Bulolo and Prosecutions at Mumeng.

2.2.2 Correctional Services

a. Current Status

- i) Statistics indicate that up to 60 percent of prisoners and remandees at Buimo are from Bulolo and Menyamya Districts
- ii) Land already identified and K50,000 paid for the designing of new 300 man prison facilities at Zenag Station in Mumeng Sub-District. The design work was done by SMEC, and will be funded by the National Government under the CS Prison Rural Lock-up Programme.

b. Future Activities (2013-2017)

- i) A 300 man new CS facilities will be developed after the design has been approved by the relevant authorities.
- ii) Permanent Correctional Services Officers to be deployed and located on site after completion of the new Prison Industries Jail facility
- iii) Negotiate for rehabilitation school to be set up for the inmates
- iv) Negotiate community works programme for low risk prisoners
- v) Establish Rural Lock-ups at Watut and Garaina

2.2.3 The Courts Systems

a. Current Status

- i) Already existing facilities for Resident Magistrate at Bulolo.
- ii) District and Land Court hearings already taking place in Bulolo and Wau

b. Future Activities (2013-2017)

- i) Support Magisterial Services to attend Circuits at LLG Stations
- ii) Improve and support all Village Courts in all LLGs by providing training and capacity to enforce LLG Rules and collect fines
- iii) Supply Uniforms and Vehicles to Village Courts operating in all six LLGs
- iv) Build join police station/village court buildings at all six LLGs in the electorate
- v) Include Court Rooms for various Courts (National, District, Land, Family Courts) as integral part of the Growth Centres Development for all the six LLGs.
- vi) Budget for the Annual Court Circuit by the District Court Magistrate at the cost of K10, 000 per circuit by 10 circuits amounting to K100, 000 per year.
- vii) Construction of National Court facilities and Resident Judge accommodation at Mumeng

2.3 Economic Sector - Agriculture & Livestock

a. Current Status

- i) Bulolo is pioneer of Tea and Coffee but needs major improvement and investment
- ii) Distributing coffee pulpers to all coffee growing wards
- iii) Purchase and install 500 coffee pulpers in 2014
- iv) Rolling out Livestock Tethering programme where the animals have populated, and second and third farmers benefiting from it.
- v) Rolling out the Honey Bee programme where harvesting is currently in progress.

b. Future Activities (2013-2017)

- i) Fully establish apiculture programmes, e.g. Honey bee hives and queens and equipment from Goroka, then hand it over to the LLGs
- ii) Training in apiculture husbandry and processing and build manufacturing plant
- iii) Expand tethering of livestock programme to include cattle, ducks, sheep & goats
- iv) Training in horticulture and floriculture and marketing support
- v) Establish Coffee Nursery and Rehabilitation Scheme with CIC
- vi) Establish coffee nurseries then redistribute seedlings to all the six LLGs
- vii) Continue distribution of coffee pulpers with Three-staff Pulper Installation Team
- viii) Establish wet and dry coffee factory in all LLG with central marketing facility
- ix) Instigation of Field Displays and Annual Agricultural Shows



- x) A 3- tonne vehicle completely fitted with animal transfer cage for the district DAL.
- xi) Waria Valley Integrated Development Project t funded by the MPG in 2015 at the cost of K1.m, with establishment of the Waria Valley Special Purpose Authority
- xii) Provide the projects with adequate support through the District Programme Co-ordinator for DPI with vehicle staff, factory and marketing facilities

2.3.2 Forestry and Logging

c. Current Status

- i) Bulolo is home to pine plantation with production of plywood and mills, prefabricated buildings and sawn treated timbers
- ii) Six Walkabout Sawmills already supplied to the LLGs in 2012.

d. Future Activities (2013-2017)

- i) Liaise with National Forest Authority for new reforestation activities and allocation of certain percentage for use for District and LLG and for local housing
- ii) Purchase and deliver Walkabout Sawmills to all LLGs
- iii) Forest Areas with links to markets are established for genuine business purposes to be supplied with new walkabout sawmills.



- iv) Ward Areas that host infrastructure such as schools, aid posts, community halls, or
- v) village housing schemes shall be considered to own a chainsaw or a walkabout saw mill to process and establish infrastructure.
- vi) Support any potential areas with large scale forestry operation with preparation of their LLGs and linking with Forestry Department for development.
- vii) Establish an installation team comprising a Team Leader, Driver and two Casuals.

2.3.3 Fisheries

a. Current Status

- i) Subsistence fishing activities mainly for home consumption
- ii) Need to introduce other breeds to complement existing breed for nutrition purpose
- iii) For income earning, fishing farming, fish ponds have been established in some parts of the district. However stocks have been allowed to regenerate and over populated while farmers are ignoring their training guidelines on proper fish farming methods.

b. Future Activities (2013-2017

- i) Establish inland fish breeding centres (model farms) for fingerlings then distribute
- ii) A revised training and extension programme for existing fish farmers to be established with Morobe Provincial Fisheries Authority
- iii) Create new fish ponds and training and supply of fingerlings to new fish farmers
- iv) Establishment of a Bulolo Fish Farmers Association to coordinate training, breeding , distribution and marketing to mining and forestry establishments and schools

2.3.4 Mining

a. Current Status

- i) Mining has been in the district with alluvial, medium and also big mining
- ii) Wau Mining School that provides training to alluvial miners
- iii) Large Scale - Hidden Valley and Wafi Mines in full operation
- iv) Medium Scale - Niuminco Mines plus others also in full operation
- v) Small Scale - Alluvial mining activities are continuing along most river bank



b. Future Activities (2013-2017)

- i) Have focal point officer for Mineral Resources Authority, Department of Mining & Geo-Hazards, Mining Warden, Wau Mining School, MMJV and Hidden Valley Mines, Medium and alluvial miners at Wau
- ii) Conduct Training on Safe Mining Methods
- iii) Supply Water Pumps and Hoses for organised family units and ward areas that are engaged in alluvial mining activities.
- iv) Sponsorship of 2 students per ward (220 total) in the next four years for stages one and two of Safe Mining Practice at the Wau Small Scale Mining School. Participants must be both male and female.
- v) Establishment of Alluvial Miners Cooperative and the buying and Smelter facilities

2.3.6 Down-Stream Processing

a. Current Status

- i) Bulolo does process coffee to green bean; grow and package chickens (Zenag Chicken) and plywood and timbers and furniture-making (PNG Forest Products)
- ii) There is walkabout saw milling and small honey extraction.

b. Future Activities (2013-2017)

- i) Re-establish Garaina Tea Plantation and processing of Garaina Tea
- ii) Establish a Coffee Mill for exports and roasting during the next 5-10 years
- iii) Build a honey extraction, processing and marketing plant

2.4 Commerce, Trade and Industry Sector

Commerce and Trade

a. Current Status

- i) Bulolo is currently the main commercial centre for the district with Wau and Mumeng also having basic, but limited commercial activities such as shops and markets.

b. Future Activities (2013-2017)

- i) Develop and convert Bulolo, Wau and Mumeng into major commerce and trade centres of the district in the next five year period. The programme will start with Wau then on to Mumeng at a cost of between K5.m-K6.m commencing in 2014.
- ii) Build sub-commercial centres at Buang, Watut, Biarua and Garaina for the same purpose at the cost about K0.5m (K500, 000.00) each.
- iii) Supply walkabout saw mills for processing timber, water pumps and hoses to boost alluvial mining activities
- iv) Establishment of Agriculture Credit Revolving Fund with Wau Micro Bank or NDB.
- v) Conduct Co-operative Operations and Management Training with Registrar of Co-operative Societies
- vi) Conduct Start Your Business and Improve Your Business (System) Training with Small Business Development Co-operation (SBDC)
- vii) Supply electricity to bolster business activities such as computers, freezers and metal fabrication, motor repairs, internet dens and printing and copying services
- viii) Construct concrete pavement and install street lighting at all private commercial establishments

2.4.2 Banking Facilities and Services

c. Current Status

- i) Basic banking services currently available in Bulolo and Wau
- ii) Digicel supplied banking facilities and services such as payment of power bills and balance-checking are being done through phone banking.

d. Future Activities (2013-2017)

- i) Establishment and installation of treasury offices at the two major centres in Wau and Mumeng as part of the Commercial Centre establishment. This exercise will be undertaken in preparation for the split of the electorate.
- ii) Establishment and installation of new banking facilities (i.e. sub-branches) at the two major centres and later extended to the LLG sub-branches.
- iii) Installation of ATM & EFTPOS machines at selected locations in the three centres, and sub-branches. This project will also include existing business houses in rural LLGs that may have access to mobile banking coverage.
- iv) Establishment and installation of E-Banking systems and services also at the three main centres in the district.
- v) Establishment of District Agriculture and SME Revolving Fund with K200,000 Guaranteed Funding

2.4.3 General Merchandising

a. Current Status

- i) Shops available in Bulolo and Wau stocked with basic items for the consumers.

b. Future Activities (2013-2017)

- i) The proposed Commercial Centres will house commercial activities which include supermarkets and other general merchandising services in the three main urban centres, as well as the sub-district centres at Buang, Watut, Biaru and Garaina.

2.4.4 Fresh Produce & Marketing Facilities

a. Current Status

- i) Fruit and vegetable markets are already available in the three main district centres as well as at the sub-district centres throughout the electorate

b. Future Activities (2013-2017)

- i) Major improvements to the existing facilities will be made to increase the capacities to cater for the increasing demands.
- ii) More roadside markets to be built on selected LLG areas

- iii) Contracted container markets through SVS at selected locations
- iv) Establishment Marketing Cooperative and Vegetable Consolidation Depot at markets and SVS depots to sell to major clients in District and outside.
- v) Establish a Farmers Marketing Co-operative to supply Jails, Boarding Schools, Hospitals and Mining Mess in the District

2.5 Land Resources Sector

Environment and Conservation

a. Current Status

- i) There is a case of environmental pollution along the Watut River during the Morobe Mining Joint Venture construction period. Reports of pollution and compensation already made to MMJV however, the people have filed the matter in court for independent assessment and decisions.

b. Future Activities (2013-2017)

- i) Liaison with Departments of Mining and Geo-Hazards, Environment and Conservation and National Forestry Authority and Coffee Industry Corporation and Bureau of Water Resources to minimise or control waste disposal in the river system
- ii) Liaison with relevant national agencies for reforestation and rehabilitation of the river system and other eco systems.

2.5.2 Parks and Reserves

a. Current Status

- i) There are few parks and reserves in the electorate which require major maintenance and rehabilitation to uplift them to acceptable standards

b. Future Activities (2013-2017)

- i) In consultation with the Environment and Conservation Department, re-establish and re-furbish the Mc Adams National Park
- ii) Development of Trekking and recreational facilities within the Park and Tracks'

2.5.3 Land Use Planning

a. Current Status

- i) Sporadic development and unplanned use of available land in the main urban areas of Wau, Bulolo and Mumeng have been of great concern over the years

b. Future Activities (2013-2017)

- i) Declaration of Physical Planning Area for Wau, Bulolo and Mumeng Town area
- ii) Funding to meet Survey Costs for development projects in the district.

2.5.4 Town Development Plan and Zoning

a. Current Status

- i) There is no physical planning authority in the district as it is still a national function under the Department of Lands & Physical Planning.
- ii) There are no town development plans in place to guide town planners as to the zoning and demarcation of services and for different purposes

b. Future Activities (2013-2017)

- i) Rezoning and updating of Survey Plans, Land Files, etc. to be conducted at Bulolo, Wau and Mumeng.
- ii) Establishment of Town Building Committee and Licensing Committee
- iii) Funding for Valuation Roll for Wau, Bulolo and Mumeng to apply rates and charges
- iv) Design, scoping and sealing of Wau, Bulolo and Mumeng towns with Dept. of Works
- v) Development of Bulolo Physical Development Plan in consultation with the Department of Lands & Physical Planning
- vi) Development of Urban Master Plan for the Towns Zones

2.5.5 Customary Land

a. Current Status

- i.) Much of the land in the district is still owned by the customary land owners. More work is needed to convert some portions of that land for development purposes, especially by the customary land owners themselves.
- ii.) There are many disputes over customary and state land within the District. There are many proceedings before Land Titles Commission and the Local and Provincial Land Courts including appeals and other proceedings related to land in the District, National and Supreme Courts.

b. Future Activities (2013-2017)

- i) Compile Civil Registration for Customary Land Identification purposes
- ii) Request special Resident Land Court Magistrate to fast-track outstanding cases.
- iii) Assist clans that chose to do ILGs at the cost of K2, 000 per clan.
- iv) Funding of Magisterial Land Courts to have consecutive court circuits in Bulolo to clear back logs of all land court cases

- iv.) Liaise with Magisterial Services to establish Mediation for all disputed land cases for both customary and state before Land Titles Commission, Local and Provincial Land Courts including appeals and other proceedings related to land in the District, National and Supreme Courts.
- v.) Awareness and Registration of customary land under Incorporated Land Group Act (ILG Act) and conversion for government and business purposes

2.6 Infrastructure Sector

Building Construction

a. Current Status

- i) Run down or no proper administration buildings in all LLGs throughout the district

b. Future Activities (2013-2017)

- i) Build three new Commercial Centres at Bulolo, Wau and Mumeng at the cost of K6.m which will house some of the facilities and services highlighted in this plan, including conference rooms, district administration, and programme managers' offices, etc.
- ii) Relocation and housing of all administration, business houses, police operational base, sub-branches of banks and other important activities in the three new Commercial Centres at Wau, Bulolo and Mumeng.
- iii) Maintenance and upgrading of all LLG Chambers and LLG Office and stations.

2.6.2 Roads and Transport

a. Current Status

- i) No road access to Garaina sub-district. Other LLGs do have access to major roads as well as feeder roads.
- ii) Budgeted K3m under the DSIP for next three years with additional funding of K2m to come from the Defence Department, totalling K5m for a new road to Garaina. The total estimated cost is about K6m over the three year period.
- iii) A 10 ton bulldozer is currently engaged between Wau-Biaru sections of the road.
- iv) Construction of the road connecting Baiune to Baini (currently under construction)
- v) Roads that are currently operational include; Wau-Biaru, Watut Feeder Road, Watut-Menyamya-Bulolo, Watut Highway, Baini Road, and Wau-Bulolo Road.
- vi) Non-operational but have work started on their upgrading and maintenance are; Middle Watut Road, Wau-Bulolo Urban, and Garaina new Road.

b. Future Activities (2013-2017)

- i) Purchase and supply 5 bulldozers D-size to replace the old fleet with current model so that the old ones can be used for parts to all LLGs,
- ii) Purchasing and re-fleeting of capital works equipment such as tractors, bulldozers, and tipper trucks after every three years. The new fleet must be the same model as the aging fleet for the purpose of re-using the parts.
- iii) Construction of the Wagau to Bumatu road which will connect to the Huon Gulf District under the join Huon-Bulolo Memorandum of Understanding.
- iv) Construction of a ring-road connecting Middle and to Lower Watut and on to Zenag.
- v) Construction of the road connecting Kasangare to Garaina station
- vi) Construction of the road connecting Hidden Valley Mine to Tekadu over the historical Bulldog Track to the sea coast
- vii) Construction of the road from Wafi to Yanda.



- viii) Maintenance & Rehabilitation of Wau-Bulolo Road by MPG at the cost of K150,000
- ix) Sealing of Bulolo and Wau townships by MPG at the cost of K2.m under the MMJV Special Services Grant
- x) Maintenance and Rehabilitation of Wau-Kasengare road by the MPG at the cost of K430, 000 in partnership with the Wau Rural LLG. A Bulldozer is already on site.

2.6.3 Bridges (including Footbridges)

a. Current Status

- i) Kumalu by-pass already under construction at the cost of K14m. The construction is being done by the Department of Works and HBS Contractors.
- ii) Patep/Mumeng Bridge also under construction at the cost of K650,000.00
- iii) Latep/Leklu Bridge at K1.7.

b. Future Activities (2013-2017)

- i) Construct five Foot bridges for every LLG in the district over the next five years
- ii) Wara Wau Creek bridge for K2.m



- iii) Replacement of Wara Wau bridge by MPG at the cost of K700,000
- iv) A new bridge at Gobiak by MPG at the cost of K500,000
- v) Also a new bridge at Biarui by MPG for k700,000
- vi) Additional new bridges to be built include;
 - Darling Road Bridge (Wau Town) for K600,000
 - ADO Compound (Wau Town) for K600,000
 - Forestry College Bridge (Bulolo Town) for K600,000
 - St Peter's Bridge (Bulolo Town) for K600,000
 - Wau Creek (Wau Rural LLG) for K2m
 - RB Bridge (Buang LLG) for K700,000
 - Koviak Bridge (Wau Rural) for K300,000

2.6.4 Airstrips

a. Current Status

- i) There are existing rural airstrips at Wau, Sim, Bapi, Omora, Garaina, Garasa, Asama, Biawaria and Tekadu.
- ii) There are three weekly flights by Air Niugini and charter flights to Bulolo

b. Future Activities (2013-2017)

- i) Empower business houses to continue maintain all existing airstrips throughout the district over the next five years.
- ii) Liaise with Rural Aviation Authority and CASA to scope, cost, maintain and certify for operations
- iii) Build Pilot Emergency House and Agents Office/Lounge at all airstrips and terminal facilities at Bulolo and Wau Airports

2.6.5 Housing

a. Current Status

- i) As experienced elsewhere throughout the nation, Housing is still a major problem for workers in the main administrative centres of the electorate as well.

b. Future Activities (2013-2017)

- i) Over the next 5 years new Housing Scheme will be established for ADOs and 2ICs, LLG Advisor, Education Inspector, Police and Health workers in all the rural LLGs.
- ii) Provide Chainsaws and Parts to all the 110 Wards
- iii) Provide Cement Mixtures also to all the 110 Wards
- iv) Ward Councillors will take charge of these machines and to ensure that local people in their respective wards build proper permanent houses for their families.

2.7 Public Utilities and Services Sector - *Electricity*

a. Current Status

- i) Mumeng and Buang LLG roll outs currently in progress
- ii) The normal low voltage power supply is available to most urban centres in the district. Some sub-districts use power generators

b. Future Activities (2013-2017)

- i) Under the Rural electrification Programme, the following is anticipated;
 - Baiyun to Timini Highway - (LV /MSK later HV)
 - Baiyun to Bulolo Newcamp - (HV and later MSK)
 - Sambie to Middle-Watut - (LV/MSK and later HV)
 - Pine Top to Grace Memorial School - (LV/HV)
 - Latep to Manianda Station - (LV and later HV and MSK)
 - Patep Munanong to Bugeau Station - (MSK)
 - Waku to Biaru - scoping in progress
 - Biaru to Garaina - after road construction has been completed
 - Hydro Turbine Installation at Garaina Station
- ii) Installation of Hydro Power for Garaina and Garasa with minimum output of 10KVA
- iii) Assist in Commercial Hydro Power supply projects between landowners and investors to sell power to main grid for income generation to possible clients such as Hidden Valley Mine, Wafi Mine, Lae City and Bulolo District.
- iv) Provide assistance towards land registration, survey and conversion.

2.7.2 Telecommunication Services

a. Current Status

- i) Communication is vital for information, news, education and business and was covered by Telekom landlines and VHF stations
- ii) Wau, Bulolo, Mumeng, Buang, Watut and parts of Wau-rural are covered by Digicel, while Mumeng and Bulolo are also covered by Citi Fone.
- iii) Citi Phone network by Telikom PNG has been established in Mumeng and Bulolo town, while current roll outs are in Buang, to be followed by Watut and Garaina.



b. Future Activities (2013-2017)

- i) Install EMTV and KUNDU 2 Towers at Bulolo urban, Wau urban and Mumeng urban centres, as well as in Watut LLG, Garaina LLG, and Buang LLG respectively.
- ii) Set up Transmission Towers to hire out to Television and Radio Stations.
- iii) Install Payphones at all LLG Headquarters, High Schools and Health Centres.
- iv) Continue to support the Digicel rollout programme and Telikom VSAT programmes and roll out to areas not currently covered by the two telephone networks.
- v) Establish Bulolo District FM radio station in partnership with NBC to be located at Mumeng. This project will be funded in the 2014 budget
- vi) Continue support to Radio Morobe to broadcast activities of Bulolo District
- vii) Subsidize the distribution of weekly newspapers such as Wantok, Sunday Chronicles and Pacific Business until daily flights can deliver all publications
- viii) Publication and distribution of District Bulletin and development of District Website

2.7.3 Postal Services

a. Current Status

- i) Normal postal services are available at the three main urban centres of Bulolo, Wau and Mumeng.

b. Future Activities (2013-2017)

- i) As for the future, the postal services will be incorporated into the Commercial Centres as part of the Administration and Commercial Centre programmes
- ii) Convert SMK to SMS SMK and provide Express Mail Services and internet services.

2.7.4 Water Supply (Rural and Urban)

a. Current Status

- i) Most of the rural communities rely on water from existing natural sources such as rivers, creeks, and springs from mountain sides.
- ii) Wau-Bulolo Urban Authority currently supplying water to Wau and Bulolo townships

b. Future Activities (2013-2017)

- i) Develop five (5) Gravity-fed water supplies to each of the 110 ward areas during the next five years
- ii) Engage ADRA and other aid donors such as European Union under a joint partnership arrangement to establish permanent water supply for Wau, Bulolo & Mumeng townships
- iii) PNG Water Board or Department of Works to be engaged to document proposed water and sewerage plan for Wau, Bulolo and Mumeng townships

2.7.5 Sewerage and Sanitation (Rural and Urban)

a. Current Status

- i) Wau-Bulolo Urban Authority currently providing these services in Wau & Bulolo

b. Future Activities (2013-2017)

- i) LLG Health Inspectors to ensure each household has covered pit latrines
- ii) Urban Water, Sewerage and Sanitation Services to be upgraded in Wau and Bulolo and expanded to Mumeng
- iii) To ascertain whether Water, Sewerage and Sanitation service will be provided by PNG Water or Urban Authority

2.7.6 Garbage Collection and Disposal

a. Current Status

- i) Garbage and Sanitation collection are Urban LLG function and village health and hygiene enforced by LLG Inspectors and Village Courts

b. Future Activities (2013-2017)

- i) Improve waste collection, disposal and management system under urban LLG.
- ii) The District will also assist all LLGs to establish and manage garbage disposal services as well as provide refuse drums at every outlet for reasonable income generating rates.
- iii) To validate a Valuation Roll for the three major Towns to ensure proper service charges are applied for land rates, garbage, sanitation and sewerage services.

2.8 District Administration and Local Level Governments

District Administration

a. Current Status

- i) All major administrative functions of the district are currently located at Bulolo which was relocated as the District Headquarters from Wau.
- ii) There are proposals to create a Anga Province comprising parts of Bulolo, Menyamya, Obura Wonenara and Kerema Districts or to create two provinces out of Morobe and also to split Bulolo District to two Electorates.
- iii) The Boundaries Commission will conduct its hearings before 2017.
- iv) The District Authorities Act has been enacted and District Authorities will be established to work with various JDBPPC.

b. Future Activities (2013-2017)

- i) Bulolo to remain as the temporary District Headquarters of the district.
- ii) Prison Farm and Industries Jail at Zenag and possible District Court and National Court to be held at Mumeng Sub District
- iii) Declaration of Zenag as a Town and the extension of Urban Authority to Zenag.
- iv) Redistribution and establishment of new wards to cater for new WaBuZe Urban LLG
- v) Submissions to Boundaries Commission on Bulolo or creation of new provinces
- vi) Construction of the new Administration and Commercial Centre and relocation of district administration to the new complex in Wau (Salamaua, Watut, Bulolo).
- vii) Design and Engineering studies to commence when construction commence at Wau for Administration and Commercial Complex for Mumeng (Buang, Mumeng, Watut).

- viii) Morobe Provincial Government to also support the establishment of the Growth Centres at Wau and Bulolo at the cost of K15.m between 2013 and 2017.
- ix) Establishment of District Development Authority to take on functions and programs that have no public service staffing provided
- x) Appointment of Appointing and Controlling Board to recruit and manage the Authority
- xi) Establishment of structure for District Engineering & Supply Unit
- xii) Establishment of Agriculture Processing Unit for marketing and processing
- xiii) Establishment of Alluvial Mining Cooperative and smelter
- xiv) Establishment of Waria Special Purpose Authority and for Impact projects

2.8.2 Sub District Administration

a. Current Status

- i) Wau, Garaina and Mumeng have Sub District status
- ii) Sub-district station at Mumeng was destroyed by flood and relocated to Zenag.
- iii) There is rural banking, postal and communication services with new Sub District and LLG Station at Zenag.

b. Future Activities (2013-2017)

- i) Bulolo to remain as the temporary District Headquarters of the district.
- ii) Prison Farm and Industries Jail at Zenag and possible District Court and National Court to be held at Mumeng Sub District
- iii) Buang, Watut and Biaru to be recognized as sub-district Headquarters.

2.8.3 LLG Administration

a. Current Status

- i) There are six LLGs in the electorate;
 - Buang LLG
 - Watut LLG
 - Waria LLG
 - Mumeng LLG
 - Wau/Bulolo Urban LLG, and
 - Wau Rural LLG
- ii) The LLGs do not have the capacity to effectively plan and implement the activities which have been transferred to them under the Organic Law Provincial Governments and Local Level Government 1995.

- iii) An MOU/MOA has been signed between the border districts and provinces for sharing of developmental programmes and projects.
- iv) The Mumeng Sub-District Headquarters is now relocated to Zenag.
- i) All LLG have District Council Advisors and Managers
- ii) Most LLG staff are provided by the District
- iii) Most LLG are understaffed or lack capacity in terms of Chambers, staffing accommodation and general staffing
- iv) There is rural banking, postal and communication services being rolled out at Mumeng, Buang, Watut and Garaina

b. Future Activities (2013-2017)

- i) A Capacity (Manpower, Technical and Financial) needs to be conducted for 6 LLG
- ii) The Urban LLG requires technical assistance to provide municipal services to Bulolo, Wau and Mumeng Towns
- iii) Declaration of Zenag as a Town and the extension of Urban Authority to Zenag.
- iv) Redistribution and establishment of new wards to cater for new WaBuZe Urban LLG
- v) Upgrading of LLG Chambers and Stations at Buang, Watut, Biarua and Garaina
- vi) Improve basic infrastructure and social services, increase business and employment opportunities, and improve the overall capacities of the sub-districts to effectively cater for the needs and demands of the people in their parts of the electorate
- vii) Build sub-commercial centres in all the sub-districts
- viii) The main focus of the capacity building exercise that have been highlighted so far in this plan during the next five years will be on the six LLGs, in terms of up-scaling their capacities to effectively perform their transferred functions in close consultation and collaboration with their district level counterparts.
- ix) All Sub-District Stations, LLG Chambers and Offices to be renovated and maintained.
- x) Annual Refresher Training for Finance Operations and LLG Management to be conducted for all LLGs
- xi) A Resolution to be passed by the JDP&BPC to split the LLGs K500,000 as follows:
 - K250,000 - Administration/Operations under LLG President
 - K250,000 - Divided equally to all Ward Councillors as Project Funds
- xii) DSIP will match the K500,000 as follows:
 - K250,000 x 6 LLGs - K1.5m per annum
 - MP's commitment - K1.5m per annum
 - Total Amount - K3.0m

- xiii) Among projects to be funded these funding arrangements include;
- Cement mixer for each of the 110 Wards
 - Chain and Bar Saw for each Ward
 - 5 Crow Bars for each Ward
 - 3 Wheel Barrows for each Ward
 - Bush knives and spades for each Ward
 - Saws & Hammers for each Ward
 - Every Ward is to construct each own Community Hall with ward office inside
 - Elementary Schools to be established in each ward
 - One-two man Aid Posts to be established at each ward
 - Support any other buildings the community is consented to like Church Buildings
 - JDP&BPC to be responsible for roofing iron and roofing nails of all buildings constructed by the LLGs
- xiv) Annual review of MOA by JDP&BPC and all LLGs to determine program impediments or extensions, etc.
- xv) Prepare an MOA/MOU for the LLGs to sign with the local MP and the District Administration to formalize and take ownership of the various programmes and services, as well as properties and assets which are to be parked at that level.
- xvi) The parties to the MOA/MOU will be represented by the following:
- JDP&BPC - represented by the local MP and the District Administrator
 - LLGs - to be represented by the LLG Presidents and LLG Manager
- xvii) Failure to comply with the MOA/MOU in terms of taking ownership and responsibilities as specified by the MOA/MOU will result in the JDP&BPC taking full ownership and control as specified under the MOA/MOU

IMPLEMENTATION MATRIX

SECTOR	ACTIVITY	LEAD AGENCY	OTHER STAKE HOLDERS	TIME - FRAME	BUDGET (K)	COMPLETION INDICATORS	ANTICIPATED OUTCOMES/ OUTPUTS
3.1 Education	i) K20,000 Annual Teacher's Improvement Program for the district from elementary to high schools	Bulolo District Education Office	- Member's Office BDJP&BPC - Balob Teachers College	2013-2017	K100,000	Sponsorship of workshops and other activities	Improved School Facilities at the college
	ii) Corporate Sponsorship of 15 students annually to Balob Teacher's College to train more local teachers.	BDEO	- Member's Office BDJP&BPC - Balob Teachers College - Parents & selected trainees - Schools involved	2013 - 2017	K900, 000 total at the rate of K12000 per student per year	Having trained 75 local teachers in 5 years	Teachers who can performed well with children & parents from their own respective local communities
	iii) Continuous support to one student per 110 wards to attend Bulolo Technical School		- Member's Office BDJP&BPC - Bulolo Technical College - Parents & selected trainees - Schools involved	2013 - 2017	K900, 000 total at the rate of K180, 000 per year for 5 years.	When 550 students have completed their training under the program in the next five years	More technically qualified people available for deployment in the district development programs.

SECTOR	ACTIVITY	LEAD AGENCY	OTHER STAKE HOLDERS	TIME - FRAME	BUDGET (K)	COMPLETION INDICATORS	ANTICIPATED OUTCOMES/ OUTPUTS
	iv) Extension of Bulolo Technical College at the cost of K1.8m (funding budgeted under the MPG budget)	Morobe Prov. Division of Education	<ul style="list-style-type: none"> - Bulolo DEO - Member's Office BDJP&BPC - Bulolo Technical College - Parents & selected trainees - Schools involved 	2014-2015	K1.8m	When extension work has been successfully completed	Adequate teaching & Learning facilities are available for all at the school.
	v) Construction of the Buang High School also at the cost of K1.8m(funding budgeted under the MPG budget)	Morobe . Prov. Div of Education	<ul style="list-style-type: none"> Bulolo DEO - Member's Office BDJP&BPC - Morobe Prov. Works Div. - Parents & citizens 	2014-2015	K1.8m	When the new school has been completed for enrolment to commence by 2016	Increased enrolment at high school level and overall improvement to quality of educn. At Buang Sub-Dist.
	vi) Also construction of the Garaina High School at the same cost of K1.8m. (funding budgeted under the MPG budget)	Morobe . Prov. Div of Education	<ul style="list-style-type: none"> Bulolo DEO - Member's Office BDJP&BPC - Morobe Prov. Works Div. - Parents & citizens 	2014-2015	K1.8m	When the new school has been completed for enrolment to commence by 2016	Increased enrolment at high school level and overall improvement to quality of educn. at Garaina Sub-Dist.
	Vii) Maintenance of Gracce memorial High School by the MPG at the cost of K200,000 Special Support Grant (SSG) National Planing Department.	Morobe . Prov. Div of Education	<ul style="list-style-type: none"> Bulolo DEO - Member's Office BDJP&BPC 	2014-2015	K200,000	Successful completion of Maintenance work at the school	Improved level of performance by the school in its teaching & learning functions

SECTOR	ACTIVITY	LEAD AGENCY	OTHER STAKE HOLDERS	TIME - FRAME	BUDGET (K)	COMPLETION INDICATORS	ANTICIPATED OUTCOMES/ OUTPUTS
			<ul style="list-style-type: none"> - Morobe Prov. Works Div. - Grace Memorial H/School 				
	<p>viii) Construction of new High School at Baiyune by MPG at the cost of K1.m.</p> <p>Special Support Grant (SSG) National Planning Department.</p>	Morobe . Prov. Div of Education	<p>Bulolo DEO</p> <ul style="list-style-type: none"> - Member's Office <p>BDJP&BPC</p> <ul style="list-style-type: none"> - Morobe Prov. Works Div. - Parents & citizens 	2014-2015	K1.8m	When the new school has been completed for enrolment to commence by 2016	Increased enrolment at high school level and overall improvement to quality of educn. at Baiyune Sub-Dist.
	<p>vx) Maintenance of Bulolo Vocational School also by the MPG at the cost K2.m.</p> <p>Special Support Grant (SSG) National Planning Department.</p>	Morobe . Prov. Div of Education	<p>Bulolo DEO</p> <ul style="list-style-type: none"> - Member's Office <p>BDJP&BPC</p> <ul style="list-style-type: none"> - Morobe Prov. Works Div. - Bulolo Vocational School 	2014-2015	K2.m	Successful completion of Maintenance work at the school	Improved level of performance by the school in its teaching & learning functions
	xvi) K1.2m allocated for teacher training programme at all levels in five years	BDJP&BPC	<p>Bulolo DEO</p> <ul style="list-style-type: none"> - Member's Office 	2013-2017	K1.2m	Sufficient teacher have been trained and are available for all levels of schools throughout the district	Improved capacity of teachers at all levels of schools in the district

SECTOR	ACTIVITY	LEAD AGENCY	OTHER STAKE HOLDERS	TIME - FRAME	BUDGET (K)	COMPLETION INDICATORS	ANTICIPATED OUTCOMES/ OUTPUTS
3.2 Health	i) Recruitment and Training of 1 Village Health Worker for each LLG	Bulolo District Health Office	- Morobe Prov. Health Div. - Members Office BDJP&BPC - The LLGs - Selected Trainees	2014-2017 and continuing based on need	50,000.00	When all the LLGs have trained VHWS operating at all the villages in the electorate	Improve standard health care and health services in the district
	ii) Also recruitment and training of Village Birth Attendant for each of the six LLGs.	Bulolo District Health Office	- Morobe Prov. Health Div. - Members Office BDJP&BPC - The LLGs - Selected Trainees	2014-2017 and continuing based on need	50,000.00	When all the LLGs have trained VBAs operating at all the villages in the electorate	Improve standard of health care and health services in the district
	iii) Continue support for Mobile Health Programme, including disbursement of medical supplies and personnel	Bulolo District Health Office	- Members Office BDJP&BPC	2013-2017 and continuing based on need	K1.5m	Ensure Basic medical supplies & health services are reaching the targeted areas	Improve standard of health care and health services in the district
	iv) Provide vehicles for health related work in Buang, Mumeng, Watut Rural, Wau Rural & outskirts of Wau/Mumeng townships	Member's Office	- Bulolo District Health Office BDJP&BPC - The respective LLGs	2013-2017 and continuing based on need	K800,000	When all the LLGs supplied with vehicles for their health workers	Improved mobility of health workers throughout the district
	v) Rehabilitation of health centres in Wau, Mumeng and Bulolo and equip them with Ex-ray Machines, Sterilizers, and Bio-Chemistry machines.	Bulolo District Health Office	- Member's Office BDJP&BPC - Manage'nt & staff of respective health centres	2014-2015	K1m	Rehabilitation work completed for each health centre as scheduled	Improved delivery of health services at the three health centres

SECTOR	ACTIVITY	LEAD AGENCY	OTHER STAKE HOLDERS	TIME - FRAME	BUDGET (K)	COMPLETION INDICATORS	ANTICIPATED OUTCOMES/ OUTPUTS
	vi) Initiate sponsorship of Private Doctors if public health doctors are not available to be based in either Bulolo or Wau townships to offer consultations to patients. The cost will be subsidized by the district.	Bulolo District Health Office	- Member's Office BDJP&BPC -Selected Private Doctors	2014 onwards	K500,000	Based on response from public health sector	Increase capacity of resident doctors at the district
	vii) Roll out major eye operation programme in the district, including 1,000 glass per LLG totalling 6,000 glasses overall. The project will also include diagnosis and operation of people of Wau Town. And Wau Rural will have theirs done in Wau town, Waria in Garaina, Watut in Bulolo, and Mumeng and Buang in Mumeng town respectively.	Bulolo District Health Office	- Member's Office BDJP&BPC - Relevant sub-health centres - All the 6 LLGs - eye patients	2013-2017	K500,000	When the program has been successfully completed with 6,000 glasses distributed to all LLGs	Improve vision and general quality of lives for those who are affected with eye problems
	viii) Provide support to TB & HIV/AIDS Programme	Member's Office	- Bulolo District Health Office BDJP&BPC -Patients affected/infected	2014-2017	K200,000	Successful rollout of the program in the district as planned	Reduction in the number of cases reported and improvement to the general health conditions of those infected & affected
	xv) A population based studies on TB & HIV/AIDS to be conducted to determine the actual population infected and affected by the two killer diseases	Bulolo District Health Office	-Member's Office BDJP&BPC - All District Health Centres -Selected Patients	2015	K50,000	Study completed with relevant data being made available for use by health workers in the district	Effective design and implementation of health care services to those infected and affected by the diseases
	x) Installation of Ex-ray for TB cases as well as TB Test kits and treatment	Bulolo District Health Office	- Member's Office BDJP&BPC -Selected health centres in the district	2014-2015	K500,000	Ex-ray machine installed and ready for use at the selected health centre, including the test kits & treatment	Availability & accessibility of such services at the district, thus preventing patients travelling to Lae to receive the service

SECTOR	ACTIVITY	LEAD AGENCY	OTHER STAKE HOLDERS	TIME - FRAME	BUDGET (K)	COMPLETION INDICATORS	ANTICIPATED OUTCOMES/ OUTPUTS
	xi) Also installation of HIV/AIDS kits and treatment	Bulolo District Health Office	- Member's Office BDJP&BPC -Selected health centres in the district	2014-2015	Same as above	HIV/AIDS Kits installed and ready for use at the selected health centre& treatment being made available	Availability & accessibility of such services at the district, thus preventing patients travelling to Lae to receive the service
	xii) Stockpile adequate supplies for TB & HIV/AIDS medication	Bulolo District Health Office	- Member's Office BDJP&BPC	2014-2015	K100,000	Stock pile of supplies completed and ready for use by the health workers in the district	Improve quality of health care and services for patients infected and affected by TB & HIV/AIDS
	xiii) K100,000 worth of other health aids to be supplied soon to the six LLGs in the district.	Bulolo District Health Office	- Member's Office BDJP&BPC	2013-2014	Refer mobile health program	When the health aids are already with the 6 LLGs and ready for use	Improve health care services at the LLG level
	ivx) Recruitment of a team of health workers comprising retired HEOs, two nurses and two drivers to man and operate the districts mobile Health Programme.	Bulolo District Health Office	- Member's Office BDJP&BPC	2013-2014	Refer mobile health program	When the mobile health team is ready to conduct its field visitation programs	Bring health services to the people where they are
	xv) Installation of Morgues to the three health centres, as well as to LLGs that have access to adequate power supply. xvi) Upgrade the Bulolo Health Centre to Rural Hospital standard by the MPG at the cost k1.m. Special Support Grant (SSG) National Planing Department.	Bulolo District Health Office MPG	- Member's Office -BDJP&BPC - LLGs with access to morgues Bulolo Health Division	2013-2015 2014-2017	K1m K1.m.	Installation program successfully completed and facilities ready for use When the upgrading work has been successfully completed	Enable death bodies to be kept more closer rather than faraway at Angau Hospital in Lae Improved provision of health services In the district

SECTOR	ACTIVITY	LEAD AGENCY	OTHER STAKE HOLDERS	TIME - FRAME	BUDGET (K)	COMPLETION INDICATORS	ANTICIPATED OUTCOMES/ OUTPUTS
	xvii) Maintenance of the Wau Health Centre also by the MPG at the cost of K300,000 Special Support Grant (SSG) National Planning Department.	MPG	Bulolo Health Division	2014-2017	K300,000	When the maintenance work has been successfully completed	Improved provision of health services at Wau Health Centre
	xviii) Provide support to TB & HIV/AIDS Programme by the National Aids Council	Bulolo District Health Office	Member's Office -BDJP&BPC -NAC	2013-2017	K100,000	NAC has the financial support needed to perform its programs	An improved status of HIV/TB related cases in the district
	xx) Support NGOs and relevant organisations to conduct awareness programmes on TB & HIV/AIDS in consultation with the National Aids Council						
	i) Formation of Youth Associations and youth groups	Bulolo District Community Development Office	- Member's Office BDJP&BPC -Youth Groups in the district	2014-2015	K20,000	Youth Association formed and youth programs ready to roll out	Involve young people in productive developmental activities
	ii) Formation of Women in Business Association	Bulolo District Community Development Office	- Member's Office BDJP&BPC -Womens Groups in the district	2014-2015	K20,000	When the WIB Association is formed and its programs ready to roll out	Involve women in organized business activities to become self-employed
	iii) Formation of an Association for Persons With Disabilities	Bulolo District Community Development Office	- Member's Office BDJP&BPC -PWDs in the district	2014-2015	K20,000	When the Association for PWDs has been formed and programs ready to roll out	Include PWDs in productive developmental activities

SECTOR	ACTIVITY	LEAD AGENCY	OTHER STAKE HOLDERS	TIME - FRAME	BUDGET (K)	COMPLETION INDICATORS	ANTICIPATED OUTCOMES/ OUTPUTS
3.3 Com. Dev. & Social Welfare Services	iv) Purchasing of 500 Sewing Machines for women, provide training then distribution of the sewing machines	Bulolo District Community Development Office	- Member's Office BDJP&BPC -Women's Groups in the district	2015	K150,000	When the 500sewing machines have been distributed after the training	Improved quality of lives for women in the district through self-employed activities
	v) Support Women in Small-Scale Business activities	Bulolo District Community Development Office	- Member's Office BDJP&BPC -Women's Groups in the district	2013-2017 and continuing	K50,000	When women are fully participating in business activities in the district	Improved quality of lives for women in the district through self-employed activities
	vi) Provide training for women in agriculture, food processing, sewing and honey bee farming	Bulolo District Community Development Office	- Member's Office BDJP&BPC -Women's Groups in the district	2013-2017 and continuing	K50,000	Successful completion of the training programs	Upscale the skills and knowledge of women in the district to be engaged in small-scale self-employment activities
	vii) Instigate Social Protection Programmes for the Elderly 60 years and over with an initial support of K200 per person per annum or K50 per quarter	Bulolo District Community Development Office	- Member's Office BDJP&BPC - Elderly people 60 years and over	2014-2017 and continuing	K250,000	Initial investigation completed to roll out the program commencing 2015	Improved quality lives for the elderly people in the district
	viii) Also instigate a Community Micro Credit Scheme for village and community groups in the district in the next five years.	Bulolo District Community Development Office	- Member's Office BDJP&BPC -Selected women's groups - DFCD	2014-2017 and continuing	K250,000	Initial investigation completed to roll out the program commencing 2015	Promote and support saving culture among individuals and families

SECTOR	ACTIVITY	LEAD AGENCY	OTHER STAKE HOLDERS	TIME - FRAME	BUDGET (K)	COMPLETION INDICATORS	ANTICIPATED OUTCOMES/ OUTPUTS
3.4 Law and Order	i) Recruitment and Training of ten (10) police reservist per LLG for replacement or retraining of existing good ones.	Bulolo Police Command	- Member's Office BDJP&BPC - Selected Police recruits	2014-2015	K100,000	When the 60 police reservists have passed out from the program	Boost police capacity leading towards improvement in law & order situation at the district
	ii) Replacement of aging vehicles to cover Mumeng LLG, Buang LLG, Watut LLG, Wau Rural LLG, Waria LLG, Wau police station, Bulolo police station, Mumeng police station, and for hot spots at Wau and Bulolo Markets. A total of ten new police vehicles at a cost of K1.5m.	Member's Office	- Bulolo Police Command BDJP&BPC - respective LLGs	2014-2015	K1.5m	All ten vehicles purchased and delivered to the respective LLGs and police stations	Boost police mobility leading towards improvement in law & order situation at the district, especially at the LLG levels
	iii) Establish new police stations at Buang, Watut, Biaru and Garaina together with a ten-man police barracks for each police station	Bulolo Police Command	- Member's Office BDJP&BPC -Respective LLGs	2014-2016	K150,000	When all the new police stations have been completed and ready for operations to commence	Ensure police presence at the LLG level and improve morale of policemen/women
	iv) Equip police personnel with firearms and ammunition for every vehicle purchased	Bulolo Police Command	-Member's Office BDJP&BPC -Firearms suppliers	2015	K400,000	When the firearms and ammunition are in the possession of the police with each vehicle supplied	Improved operational capacity of the police at the district
	v) A 300 man new CS Rural Lockup facilities to be built at Zenag after the design has been approved by the relevant authorities.	-National Department of CS -Dept. of National Planning & Monitoring	-Member's Office BDJP&BPC -Bulolo Police & the Courts	2013-2014	K100,000	The new facility (Rural Lockup) completed and ready for use	Improved CS facilities and services at the district
	vi) Support Magisterial Services to attend to or conduct LLG court hearings	Magisterial Services at Bulolo	Member's Office -Bulolo Police & the Courts - All LLGs	2014-2017 and continuous	K250,000	When the magisterial services are well equipped & resourced to Effectively perform their activities	Improved magisterial services in the district

SECTOR	ACTIVITY	LEAD AGENCY	OTHER STAKE HOLDERS	TIME - FRAME	BUDGET (K)	COMPLETION INDICATORS	ANTICIPATED OUTCOMES/ OUTPUTS
3.5 Culture and Tourism	vii) Provide support to Village Court Magistrates in all LLGs	Magisterial Services at Bulolo	Member's Office BDJP&BPC -Bulolo Police & the Courts - All LLGs	2014-2017 and continuous	K50,000	When the Village Court Magistrates are properly resourced and equipped to perform their duties effectively, especially at the LLG level	Improved morale and performance of VCM at all LLGs in the district
	viii) Supply Uniforms and Vehicles to Village Courts operating in all six LLGs	Magisterial Services at Bulolo	Member's Office BDJP&BPC -Bulolo Police & the Courts - All LLGs	2014-2017 and continuous	K50,000	When the uniforms and vehicles have been delivered to all the VCs in the six LLGs	Improved morale and performance of VCM at all LLGs in the district
	ix) Build joint police station/village court houses at all six LLGs in the electorate	-Bulolo Police Command Magisterial Services at Bulolo	Member's Office BDJP&BPC -Bulolo Police & the Courts - All LLGs	2014-2016	K2m	Completion of the project at all 6 LLGs	Improved operational facilities of Police and Courts at commonly shared locations throughout the district
	x) Improve operational capacity of Police Prosecution Unit at Wau and Bulolo, including purchasing of a new vehicles	Bulolo Police Command	Member's Office BDJP&BPC	2014	K50,000	When Prosecution Units at Wau & Bulolo have received their vehicles and other required support to carry out their duties	Improved operational capacity of the prosecution Units at Wau and Bulolo
	i) Encourage and stage Cultural and Music Festivals on rotational basis in the three main sub-district of Bulolo, Wau and Mumeng in the years ahead.	District Administrator's Office	-Member's Office BDJP&BPC - Bulolo Com Deve. Office	2014-2017 and continuous	K500,000	When preparation commence for the first CMF in 2014	Promote and preserve the district's rich cultural heritage

SECTOR	ACTIVITY	LEAD AGENCY	OTHER STAKE HOLDERS	TIME - FRAME	BUDGET (K)	COMPLETION INDICATORS	ANTICIPATED OUTCOMES/ OUTPUTS
3.6 Agriculture, Livestock and Wildlife	i) Fully establish agriculture tethering programmes, eg. Honey bee from Goroka, then hand it over to the LLGs	-Bulolo DPI Office	- Member's Office BDJP&BPC _ Honey experts from Goroka - All the 6 LLGs	2013-2017	K1.5m	When the tethering program has been completed and handed over to the LLGs to commence implementation	Produce quality honey from within the district by the local village farmers
	ii) Expand tethering of livestock programme to include cattle, ducks and goats before passing it on to the LLGs	-Bulolo DPI Office	- Member's Office - All the 6 LLGs BDJP&BPC	2014-2017	Refer above	When the tethering program has been completed and handed over to the LLGs to commence implementation	Improved agriculture production, including local consumption at all LLGs in the district
	iii) Provide the project with adequate support through the District Programme Manager or Co-ordinator for DPI	Bulolo DPI Office	Bulolo DPI Office BDJP&BPC	2014-2017	Refer above	When the tethering program has been completed and handed over to the LLGs to commence implementation	Improved agriculture production, including local consumption at all LLGs in the district
	iv) Establish coffee nurseries then redistribute seedlings to all the six LLGs	Bulolo DPI Office	- Member's Office - All the 6 LLGs	2014-2017	K200,000	When all the LLGs have received their coffee seedlings	Improved economic viability of the district through coffee production
	v) Continue distribution of coffee pulpers to the LLGs	Bulolo DPI Office	- Member's Office BJDP&BPC - All the 6 LLGs	2014-2017	K500,000	When all the LLGs have received their coffee pulpers	Increased coffee production and processing by growers at all LLGs

SECTOR	ACTIVITY	LEAD AGENCY	OTHER STAKE HOLDERS	TIME - FRAME	BUDGET (K)	COMPLETION INDICATORS	ANTICIPATED OUTCOMES/ OUTPUTS
3.7 Fisheries	vi) Establish a Pulper Installation Team and allocate a vehicle for roll out purposes	Bulolo DPI Office	- Member's Office BJDP&BPC - All the 6 LLGs -Coffee Pulper Installation Team Members	2014-2017	K600,000	Completed installation of coffee pulbers at all LLGs by the CPI Team	Improved capacity of coffee growers in the district
	vii) Instigation of Annual Agricultural Shows	Bulolo DPI Office	- Member's Office BJDP&BPC - All the 6 LLGs	2014-2017 and continuing	Refer to 3.5 above	Show committee established and first show ready to kick-starts in 2014	Show-case the district's agricultural production thus encouraging more people to engage in agricultural activities
	i) Tethering fish fingerlings then distribute to all the LLGs in the coming years	Bulolo DPI Office	- Member's Office BJDP&BPC - All the 6 LLGs - Provincial Fisheries Officers	2014-2017 and continuing	K1.5m	When fish fingerlings have been distributed to all LLGs	Improve fish farming for export as well as home consumption thus improved diet for the people in the district
	ii) A revised training programme for existing fish farmers to be established as soon as possible	Bulolo DPI Office	- Member's Office BJDP&BPC - Provincial Fisheries Officers	2014-2017 and continuing	Refer to above	Training programs established and training ready to commence	Impart technical knowledge and skills on fish farming to the fish farmers
	iii) Create new fish ponds and training of new fish farmers	Bulolo DPI Office	Member's Office BJDP&BPC - Provincial Fisheries Officers	2014-2017 and continuing	Refer to above	New fish ponds dug up and new fish farmers trained	Create more fish farming opportunities for interested fish farmers

SECTOR	ACTIVITY	LEAD AGENCY	OTHER STAKE HOLDERS	TIME - FRAME	BUDGET (K)	COMPLETION INDICATORS	ANTICIPATED OUTCOMES/ OUTPUTS
	iv) Purchase and supply new fingerlings to new fish farmers	Bulolo DPI Office	Member's Office BJDP&BPC - Provincial Fisheries Officers	2014-2017 and continuing	Refer to above	Fish Fingerlings ready for distribution to new fish farmers	Create more fish farming opportunities for interested fish farmers
	v) Engagement of a full time excavator to dig new fish ponds	Bulolo DPI Office	Member's Office - Provincial Fisheries Officers	2014-2015	Refer to above	Excavator engaged and ready to commence excavation	Relieve local fish farmers of the mammoth task of digging the fish ponds manually
	vi) Establishment of a Bulolo Fish Farmers Association	Bulolo DPI Office	Member's Office BJDP&BPC - Provincial Fisheries Officers	2015	K25,000	Bulolo Fish Farmers Association formed and ready to commence its activities	Act as the forum and voice for fish farmers in the district
	vii) Appoint a new District Fish Farming Co-ordinator	Bulolo DPI Office	Member's Office BJDP&BPC - Provincial Fisheries Officers	2014	K200,000	When the DFFC is on the ground to take up his new post	Provide technical advice and support as well as co-ordinate all fisheries activities at the district
	viii) Assist the Bulolo Fish Farmers Association to access fish markets.	District Fish Farming Co-ordinator	-Bulolo DPI Office -Member's Office BJDP&BPC - Provincial Fisheries Officers	2014-2017 and continuing	Refer to above (v)	Markets found and fish farmers beginning to sell their fish to those markets	Improved economic viability of fish farming, thus allowing more people to participate in fish farming
3.8 Forestry	i) Purchase and deliver Walkabout Sawmills to all LLGs	Forest or DPI Office Bulolo	-- Member's Office BJDP&BPC - All 6 LLGs	2014-2015	K500,000	When the 6 LLGs have been installed with their respective Walkabout Sawmills	Enable local people to harvest their own timber and build quality permanent residence for their families

SECTOR	ACTIVITY	LEAD AGENCY	OTHER STAKE HOLDERS	TIME - FRAME	BUDGET (K)	COMPLETION INDICATORS	ANTICIPATED OUTCOMES/ OUTPUTS
3. 9 Mining	ii) Also Forest Areas which have links to markets, and are established for genuine business purposes can be considered and supplied with new walkabout sawmills.	Forest or DPI Office Bulolo	-- Member's Office - Relevant Forest Areas BJDP&BPC	2014-2015	K250,000	When the genuine forest areas have been identified and supplied with Walkabout Sawmills	Increased and improve operational capacities of those areas so that local sawmill operators, eg. LLGs, can also have access to those markets as well.
	iii) In addition Ward Areas that may play host to infrastructure such as schools, aid posts, community halls, or village housing schemes shall be considered to own a chainsaw or a walkabout saw mill to process and establish infrastructure.	Forest or DPI Office Bulolo	-- Member's Office - Relevant Ward Areas BJDP&BPC	2014-2017	K2m (Incl cement mixer)	When such ward areas have been identified and enlisted for a chainsaw or a walkabout sawmill	Minimize cost on infrastructure development, as well as promote ownership and self reliant
	iv) Any potential areas that have large scale forestry operation can be supported by the district with preparation of their ILGs and linking with Forestry Department for development.	Forest or DPI Office Bulolo	-- Member's Office - Any potential areas with large scale forest operation BJDP&BPC	2014-2017	Refer to above	When such areas have been identified and linked up with the Forest Dept. for registration of their land under the ILG Act	To free up their customary land for development purposes
	v) Establish an Installation Team comprising a Manager or Team Leader, a Driver and two Casuals.	Forest or DPI Office Bulolo	-- Member's Office BJDP&BPC	2014-2017	K200,000	Installation Team has been established prepared to performed its duties	Fast-track the sawmills installation process with less delay
	i) Conduct Training on Safe Mining Methods	Wau Small Scale Mining School (MRA)	-- Member's Office BJDP&BPC	2014-2017 and continuing	K300,000	Successful completion of the Training on Safe Mining Methods	Improve health and safety especially of alluvial gold miners
	ii) Supply Water Pumps and Hoses for organised family units that are engaged in Alluvial mining activities.	JDP&BPC	-- Member's Office BJDP&BPC	2014-2017 and continuing	K1m	Water pumps and Hoses are being supplied to the appropriate family units	Improved facilities and tools for alluvial mining among family units

SECTOR	ACTIVITY	LEAD AGENCY	OTHER STAKE HOLDERS	TIME - FRAME	BUDGET (K)	COMPLETION INDICATORS	ANTICIPATED OUTCOMES/ OUTPUTS
3.10 Down Stream Processing	i) Establish a Coffee Mill during the next 5-10 years	DPI & Commerce Officers at Bulolo	-- Member's Office BJDP&BPC - Coffee growers and buyers in the district	2017	With Partnership & costs TBA	The coffee mill has been established and ready to commence its operations	Provide immediate market for local growers as well as promote down-stream processing of local products at the district level
3.11 Commerce and Trade	i) Develop and convert Bulolo, Wau and Mumeng into major commerce and trade centres of the district in the next five year period. The programme will start with Wau then on to Mumeng at an estimated cost of between K6.m each commencing in 2014.	Bulolo District Administration	- Member's Office BJDP&BPC - MPG	2014-2017	K12.m	When the Major Commerce and Trade Centre have been successfully completed in the three main urban centres	Decentralize and spread major trade and business activities in the three main urban centres for ease of access as well as to promote growth in such activities throughout the district
	ii) Build sub-commercial centres at Buang, Watut, Biarua and Garaina for the same purpose at the cost about K0.5m (K 500,000.00) each.	Bulolo District Administration	- Member's Office BJDP&BPC - MPG	2014-2017	K2.m	When the Sub-Commerce and Trade Centre have been successfully completed in the four sub-districts	Further decentralize and spread major trade and business activities down to the four sub-urban centres
	iii) Supply electronics to bolster business activities such as computers, freezers and metal fabrication to compliment rural electrification rollout program	Bulolo District Administration	- Member's Office BJDP&BPC Relevant companies/Suppliers	2014-2017	K1.5m	When such facilities and services are available for consumers use	Bolster and improve business activities in the district
	iv) Construct concrete pavement and install street lighting at all private commercial establishments	Bulolo District Administration	- Member's Office BJDP&BPC - PNG Power - Selected builders & contractors	2014-2017	K2m	Successful completion of concrete pavements and street lightings at private commercial establishments	Improved image and safety of residents and business communities in the major urban centres

SECTOR	ACTIVITY	LEAD AGENCY	OTHER STAKE HOLDERS	TIME - FRAME	BUDGET (K)	COMPLETION INDICATORS	ANTICIPATED OUTCOMES/ OUTPUTS
3.12 Banking Facilities and Services	i) Establishment and installation of treasury offices at the two major centres in Wau and Mumeng as part of the CC establishment. This exercise will be undertaken in preparation for the split of the electorate.	Treasury Office Bulolo	- Member's Office BJDP&BPC -District Administration	2014-2016	Refer to above (i)	Successful installation of treasury offices in those two urban centres	Improved treasury and financing services in those two sub-centres
	ii) Establishment and installation of new banking facilities (i.e. sub-branches) at the two major centres in conjunction with the two CC developments and later branch out to the LLG sub-branches.	BSP Bulolo Branch	- Member's Office BJDP&BPC -District Administration - Other Commercial Banks in due course	2014-2016	Refer to above (i)	Successful installation of sub-branches of BSP and others commercial bank in those two urban centres	Improved banking services in the two sub-centres
	iii) Installation of ATM & EFTPOS machines at selected locations in the three centres, including sub-branches. This project will also include existing business houses in rural LLGs that may have access to mobile banking coverage.	BSP Bulolo Branch	- Member's Office BJDP&BPC -District Administration - Other Commercial Banks in due course - Selected business locations	2014-2016	Refer to above (i)	Successful installation of ATM & EFTPOS machines in the selected locations	Improved accessibility to mobile banking services in the main urban centres
	iv) Establishment and installation of E-Banking systems and services also at the three main centres in the district.	BSP Bulolo Branch	- Member's Office BJDP&BPC -District Administration - Other Commercial Banks in due course -Telikom - Digicel	2014-2017	K100,000	Successful installation of E-Banking services in the three main urban centres	Variety of banking services thus increase accessibility and improvement to quality of banking services throughout the district

SECTOR	ACTIVITY	LEAD AGENCY	OTHER STAKE HOLDERS	TIME - FRAME	BUDGET (K)	COMPLETION INDICATORS	ANTICIPATED OUTCOMES/ OUTPUTS
3.13 General Merchandising	i) The proposed Commercial Centres will house more commercial activities which include supermarkets and other general merchandising services in the three main urban centres, as well the sub-district centres at Buang, Watut, Biarua and Garaina.	Commerce Division Bulolo	- Member's Office BJDP&BPC -MPG -District Administration -Interested merchandising companies	2014-2017 and continuing	K600,000	When the CCs have been completed and merchandising companies begin to move in and find spaces to rent and operate	Increase and improve commercial activities in the main urban centres of the district
3.14 Marketing Facilities and Services	i) Major improvements to the existing facilities will be made to increase the capacities to cater for the increasing demands.	All 6 LLGs	- Member's Office BJDP&BPC -District Administration	2014-2017 and continuing	In partnership with MPG & LLG costs TBA	Completed marketing facilities available for use at all 6 LLGs	Improved marketing facilities to increase people's full participation in rural-based economic activities
3.15 Parks & Reserves	i) In consultation with the Environment and Conservation Department, re-establish and re-furbish the MC Adams Park	-District Administration	- Member's Office BJDP&BPC -Dept. Env. & Conservation	2014	K25,000	When the park has been fully re-established and re-furbished	Conserve & preserve historical sites as well as encouraging leisure & recreational activities
3.16 Land use Planning	i) Funding to be made available to meet Survey Costs for development projects in the district.	Member's Office BJDP&BPC	-MPG - Dept. Lands & Physical Planning -District Administration	2015	K2m	Funds become available for work to commence	Free up land for development projects in the district, especially customary land
3.17 Town Development Plan & Zoning	i) Rezoning and updating of Survey Plans, Land Files, etc. to be conducted at Bulolo, Wau and Mumeng.	-District Administration	Member's Office BJDP&BPC -MPG - Dept. Lands & Physical Planning	2014-2017	Refer to above	Successful completion of the exercise at Wau, Bulolo & Mumeng	Organized and proper use of land for assigned purposes to improve delivery of services

SECTOR	ACTIVITY	LEAD AGENCY	OTHER STAKE HOLDERS	TIME - FRAME	BUDGET (K)	COMPLETION INDICATORS	ANTICIPATED OUTCOMES/ OUTPUTS
3.18 Customary Land	i) Fund Land Court Magisterial Services to clear all backlogs of outstanding land cases still pending in Bulolo District.	Magisterial Services at Bulolo	Member's Office BJDP&BPC - Dept. Lands & Physical Planning	2014-2017	K300,000	When Land Court Magistrates are based on the ground at Bulolo	Eliminate future backlog of land court cases by having a resident LC Magistrate on the ground
	ii) Assist clans that chose to do ILGs at the cost of K2,000 per clan in the next five years. (start with 130 applications)	-District Administration	Member's Office BJDP&BPC - Dept. Lands & Physical Planning	2013-2017	K260,000	When interested clans have had their ILGs completed	Free up their land for development purposes as well as to ensure the Los have legal titles over their lands
3.19 Building Construction	i) Build three new Commercial Centres at Bulolo, Wau and Mumeng at the cost of K6.m which will house some of the facilities and services highlighted in this plan, including conference rooms, district administration, and programme managers' offices among others.	-District Administration	Member's Office BJDP&BPC -MPG -Building construct. companies	2013-2017	K12m Refer to above same costing	Successful completion of the project	Improved facilities, utilities, infrastructure and services at the three main urban centres in the district
	ii) Relocation and housing of all administration, business houses, police operational base, sub-branches of banks and other important activities in the three new Commercial Centres.	-District Administration	Member's Office BJDP&BPC -MPG -Building construct. companies	2013-2017	Refer to above	Successful completion of the project	Improved facilities, utilities, infrastructure and services at the three main urban centres in the district
3.20 Roads & Transport	i) Purchase and supply 5 bulldozers D-size to replace the old fleet with current model so that the old ones can be used for parts to all LLGs.	Works & Transport Division Buolo or District Administration	Member's Office BJDP&BPC - Selected Suppliers - All 6 LLGs	2013-2017	K10m	When the 5 Bulldozers are on site to commence operation	Improved road network

SECTOR	ACTIVITY	LEAD AGENCY	OTHER STAKE HOLDERS	TIME - FRAME	BUDGET (K)	COMPLETION INDICATORS	ANTICIPATED OUTCOMES/ OUTPUTS
	ii) Purchasing and re-fleeting of capital works equipment such as tractors, bulldozers, and tipper trucks after every three years. The new fleet must be the same model as the aging fleet for the purpose of re-using the parts.	Works & Transport Division Buolo or District Administration	Member's Office BJDP&BPC - Selected Suppliers - All 6 LLGs	2013-2017	Refer to above	When the necessary parts, equipment & accessories are on site and ready to be used	Sustainable supply of parts, equipment and accessories as and when required
	i) Construction of the Wagau to Bumatu road & Bugeyau Pele which will connect to the Huon Gulf District under the joint Huon-Bulolo MOU. Machines will be provided by Huon Gulf District while Bulolo will provide operational costs at K60,000.00 each	Works & Transport Division Buolo or District Administration	Member's Office BJDP&BPC Provided by Huon District as per MOU	2013-2017	K120,000	When both roads have been successfully completed	Improved accessibility to goods and services
	iv) Construction of a ring-road connecting Middle Watut to Lower Watut and on to Zenag. Operational costs only provided by JDP&BPC while LLG machine will be deployed.	Works & Transport Division Buolo or District Administration	Member's Office BJDP&BPC Mumeng LLG & JDP&BPC	2013-2017	K400,000	When the ring road has been successfully completed	Improved accessibility to goods and services
	v) Construction of the road connecting Kasangare to Garaina station	Works & Transport Division Buolo or District Administration	Member's Office BJDP&BPC - Selected contractors	2013-2017	K8m	When the new road has been successfully completed	Improved accessibility to goods and services
	vi) Construction of the road connecting Hidden Valley Mine to Tekadu over the historical Bulldog Track	Works & Transport Division Buolo or District Administration	Member's Office BJDP&BPC - Selected contractors - Morobe Mining Joint Venture	2013-2017	K500,000	When the new road has been successfully completed	Improved accessibility to goods and services

SECTOR	ACTIVITY	LEAD AGENCY	OTHER STAKE HOLDERS	TIME - FRAME	BUDGET (K)	COMPLETION INDICATORS	ANTICIPATED OUTCOMES/ OUTPUTS
3.21 Bridges (including foot Bridges)	vii) Construction of the road from Wafito Yanda.	Works & Transport Division Buolo or District Administration	Member's Office BJDP&BPC In partnership with MMJV Wafi Site.	2013-2017	K250,000	When the new road has been successfully completed	Improved accessibility to goods and services
	viii) Maintenance & Rehabilitation of Wau-Bulolo Road by MPG. Must work in partnership to share cost with MPG with existing district road works program.	- MPG	-Works & Transport Division Buolo -Member's Office BJDP&BPC - Selected contractors	2014-2017	K 150,000	Maintenance & rehabilitation work successfully completed	Improved accessibility to goods and services
	xv) Sealing of Bulolo and Wau townships by MPG. Special Support Grant (SSG) National Planning Department.	- MPG	-Works & Transport Division Buolo -Member's Office BJDP&BPC - Selected contractors	2014-2017	K 2.m	Sealing work successfully completed	Improved accessibility to goods and services.
	x) Maintenance and Rehabilitation of Wau-Kasengare road also by the MPG. Must work in partnership to share cost with MPG with existing district road works program.	- MPG	-Works & Transport Division Buolo -Member's Office BJDP&BPC - Selected contractors	2014-2017	K 430,000	Maintenance & rehabilitation work successfully completed	Improved accessibility to goods and services
	i) Kumalo by-pass already under construction. National Planning Department under 2012 Budget Appropriation.	Works & Transport Division Buolo or District Administration	-Member's Office BJDP&BPC DoW & National Planning	2013-2014	K 14m	When all construction work completed and bridge ready for opening	Improved accessibility to goods and services

SECTOR	ACTIVITY	LEAD AGENCY	OTHER STAKE HOLDERS	TIME - FRAME	BUDGET (K)	COMPLETION INDICATORS	ANTICIPATED OUTCOMES/ OUTPUTS
	ii) Patep/Mumeng Bridge also under construction.	Works & Transport Division Buolo or District Administration	-Member's Office BJDP&BPC - Selected contractors	2013	K 650,000	When all construction work completed and bridge ready for opening	Improved accessibility to goods and services
	iii) Latep/Lakiu Bridge	Works & Transport Division Buolo or District Administration	-Member's Office BJDP&BPC - Selected contractors	2013-14	K 1.7m	When all construction work completed and bridge ready for opening	Improved accessibility to goods and services
	iv) Wara Wau bridge.	- LLGs	Member's Office BJDP&BPC - Selected contractors	2014-15	K 2m	When the new foot bridges has been successfully completed	Improved accessibility to goods and services
	v) Construct three (3) Foot bridges for every LLG in the district over the next five years	- LLGs	Member's Office BJDP&BPC	2013-2017	K2m	When the new foot bridges have been successfully completed	Improved accessibility to goods and services
	vi) Replacement of Wara Wau bridge by MPG. Must work in poartnership to share cost with MPG refer (iv)	- MPG	-Works & Transport Division Buolo -Member's Office BJDP&BPC - Selected contractors	2014-2017	K 700,000	Replacement work successfully completed and bridge ready to be used	Improved accessibility to goods and services
	iv) A new bridge at Gobiak by MPG.	- MPG	-Works & Transport Division Buolo -Member's Office BJDP&BPC - Selected contractors	2014-2017	K 500,000	New bridge successfully completed and ready to be used	Improved accessibility to goods and services

SECTOR	ACTIVITY	LEAD AGENCY	OTHER STAKE HOLDERS	TIME - FRAME	BUDGET (K)	COMPLETION INDICATORS	ANTICIPATED OUTCOMES/ OUTPUTS
3.22 Airstrips	v) Also a new bridge at Biaru by MPG.	- MPG	-Works & Transport Division Buolo -Member's Office BJDP&BPC - Selected contractors	2014-2017	K 700,000	New bridge successfully completed and ready to be used	Improved accessibility to goods and services
	i) Empower business houses to maintain all existing airstrips throughout the district over the next five years	Works & Transport Division Buolo or District Administration	-Member's Office BJDP&BPC - Selected business house	2014-2017 and continuing	K200,000	Contractual Agreements signed between BJDP & BPC and the selected business houses	Improved air transport services throughout the district
3.23 Housing	i) Over the next five years new Housing Scheme will be established for Police and Health workers in all the rural LLGs of the district In partnership with MPA	District Administration	-Member's Office BJDP&BPC - All rural LLGs	2013-2017	K300,000	Housing scheme established at the rural LLGs	Improved living conditions of the police personnel & health workers, thus boost work morale
3.24 Electricity	Under the Rural electrification Programme, the following electrification work is anticipated;				325,000		
	i) Baiyun to Timini Highway - (LV /MSK later HV)	-PNG Power	Member's Office BJDP&BPC	2013-2017	K1m	Successful completion of electrification work from Baiyun to Timini H'way	Improve quality of lives with power/ electricity
	ii) Baiyun to Bulolo Newcamp - (HV and later MSK)	-PNG Power	Member's Office BJDP&BPC	2013-2017	K1m	Successful completion of electrification work from Baiyun to Bulolo	Improve quality of lives with power/ electricity
	iii) Sambie to Middle-Watut – (LV/MSK and later HV)	-PNG Power	Member's Office BJDP&BPC	2013-2017	K1m	Successful completion of electrification work from Sambie to Middle-Watut	Improve quality of lives with power/ electricity

SECTOR	ACTIVITY	LEAD AGENCY	OTHER STAKE HOLDERS	TIME - FRAME	BUDGET (K)	COMPLETION INDICATORS	ANTICIPATED OUTCOMES/ OUTPUTS
3.25 Telecommuni- cation Services	iv) Paintop to Grace Memorial School – (LV/HV)	-PNG Power	Member's Office BJDP&BPC	2013-2017	K1m	Successful completion of electrification work from Paintop to Grace Memorial School	Improve quality of lives with power/ electricity
	v) Latep to Manianda Station – (LV and later HV and MSK)	-PNG Power	Member's Office BJDP&BPC	2013-2017	K1m	Successful completion of electrification work from Latep to Manianda Station	Improve quality of lives with power/ electricity
	vi) Patep Munanong to Bugeau Station – (MSK)	-PNG Power	Member's Office BJDP&BPC	2013-2017	K1m	Successful completion of electrification work from Patep Munanong to Bugeau Station	Improve quality of lives with power/ electricity
	vii) Wau to Biaru – scoping in progress	-PNG Power	Member's Office BJDP&BPC	2013-2017	K25,000	Successful completion of electrification work from Waku to Biaru	Improve quality of lives with power/ electricity
	viii) Biaru to Garaina – after road construction has been completed	-PNG Power	Member's Office BJDP&BPC	2013-2017	TBA	Successful completion of electrification work from Biaru to Garaina	Improve quality of lives with power/ electricity
	i) Install EMTV and KUNDU 2 Towers at Bulolo urban, Wau urban and Mumeng urban centres, as well as in Watut LLG, Garaina LLG, and Buang LLG respectively.	EM TV & Kundu 2 TV	Member's Office BJDP&BPC -Concerned LLGs	2013-2017	K250,000.00	Installation of towers successfully completed	Improved delivery and dissemination of information and communication in affected LLGs
	ii) Continue to support the Telikom Visat programmes respectively and roll out to areas not currently covered by the two Digicel networks	Digicel Foundation	Member's Office BJDP&BPC	2013-2017	K2m	Programmes are being rolled out to those areas not currently covered	Increased accessibility and improved communication and information services through mass communication
	iii) Establish Bulolo District FM radio station in partnership with NBC to be located at Mumeng. This project will be funded in the 2014 budget	NBCRadio Morobe	Member's Office BJDP&BPC	2014	K500,000	The Bulolo FM Station fully established and ready to kick-start broadcasting	Increased accessibility and improved communication and information services through mass communication

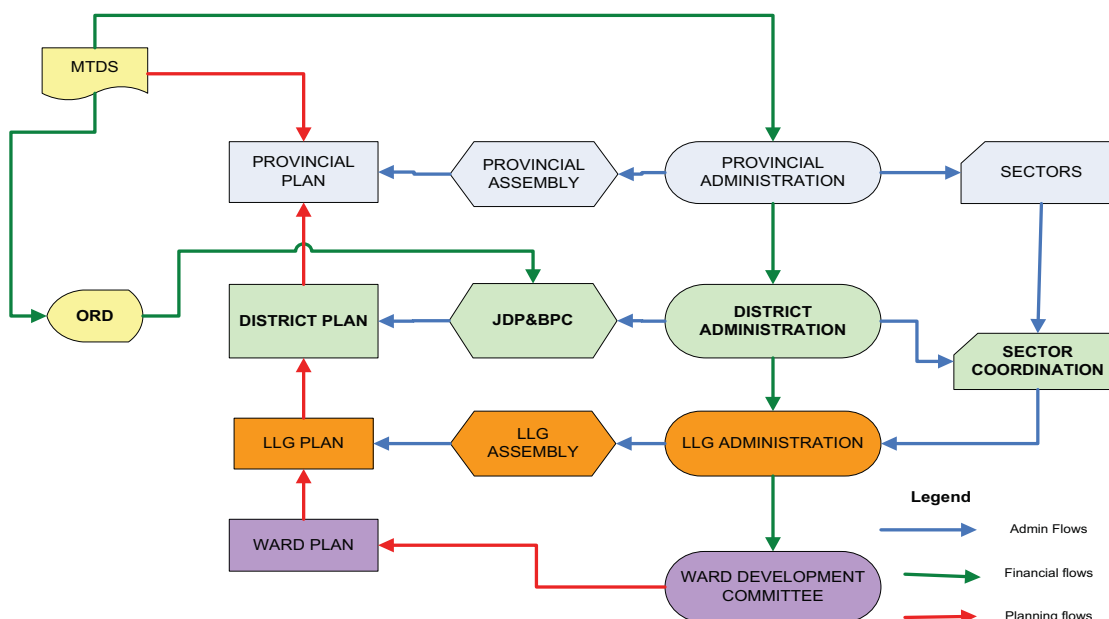
SECTOR	ACTIVITY	LEAD AGENCY	OTHER STAKE HOLDERS	TIME - FRAME	BUDGET (K)	COMPLETION INDICATORS	ANTICIPATED OUTCOMES/ OUTPUTS
3.26 Postal Services	iv) Continue support to Radio Morobe to remain focus on broadcasting activities of Bulolo District	PNG Water	Member's Office BJDP&BPC	2013-2017	?????	That the expected support is being provided on regular basis	Expose Bulolo District to the outside world, especially the positive images of its development agendas
	i) Incorporate postal services into the Commercial Centres as part of the CC development programme.	Bulolo Postal Services	Member's Office BJDP&BPC - CC Developers	2013-2017	Refer to above	When postal services are ready to commence operations at the new CCs.	Ensure postal services are readily available and accessible at all three main urban centres
3.27 Water Supply	i) Develop five (5) Gravity-fed water supplies to each of the 110 ward areas during the next five years	PNG Water Board	Member's Office BJDP&BPC - Aid donors and Developers	2013-2017	K500,000	Successful installation of Gravity-fed water supply to all the 110 ward areas	Accessible and improved quality of water thus reduction in water-borne diseases in the district
3.28 Sewerage & Sanitation	ii) Engage ADRA and other aid donors such as European Union under a joint partnership arrangement which has worked successfully so far in establishing permanent water supply for Wau, Bulolo & Mumeng townships	District Administration	Member's Office BJDP&BPC - Aid donors and Developers	2013-2017	K500,000		
	i) To Remain as national function						
	i) To remain as urban LLG function						

SECTOR	ACTIVITY	LEAD AGENCY	OTHER STAKE HOLDERS	TIME - FRAME	BUDGET (K)	COMPLETION INDICATORS	ANTICIPATED OUTCOMES/ OUTPUTS
3.29 Garbage Collection & disposal	i) The District will also assist all LLGs to establish and manage garbage disposal services as well as provide refuse drums at every outlet for reasonable income generating rates.	District Administration	Member's Office BJDP&BPC - Urban LLGs Mumeng, Bulolo & Wau.	2013-2017 and continuing	TBA	When all LLGs have their respective Garbage Collection & Disposal established	A properly managed garbage disposal & waste management system to ensure of cleanliness and healthy environment
3.30 District & Sub-District Administration	i) Bulolo to remain as the temporary District Headquarters of the district	District Administration	Member's Office BJDP&BPC	2013-2017 and continuing	Reminder	To ensure that Bulolo still remains as the HQ of the district or electorate	Like other districts or electorate throughout the nation, one of the sub-centres must remain as the focal point of all administrative and business activities
	ii) Construction of the new Commercial Centre and relocate the district administration to the new complex in Wau.	District Administration	Member's Office BJDP&BPC	2013-2017	Refer to above	When the relocation exercise has been successfully completed	Improve services and facilities for equal access & benefit by all
	iii) After the completion of Wau CC, tendering and construction of the Mumeng CC will commence. Mumeng will then become the HQ for Buang, Mumeng itself, Salamaua, Watut and Bulolo should the Boundaries Commission recommendations be reactivated.	District Administration	Member's Office BJDP&BPC	2013-2017	Refer to above	When the tendering and construction work have been successfully completed	Decentralization of infrastructure, services and facilities for equal access & benefit by all
	iv) Buang, Watut, Biarua and Garaina to be recognized as sub-district Headquarters.	District Administration	Member's Office BJDP&BPC	2013-2017 and continuing		When the four areas are being recognized as the sub-district HQs	Decentralization of infrastructure, services and facilities for equal access & benefit by all
	v) The emerging Mumeng station to be recognized as a township alongside Wau and Bulolo.	District Administration	Member's Office BJDP&BPC	2013-2017 and continuing		When Mumeng station has been upgraded urban centre level like Wau & Bulolo	Decentralization of infrastructure, services and facilities for equal access & benefit by all.

SECTOR	ACTIVITY	LEAD AGENCY	OTHER STAKE HOLDERS	TIME - FRAME	BUDGET (K)	COMPLETION INDICATORS	ANTICIPATED OUTCOMES/ OUTPUTS
3.31 LLG Administration	vi) Improve basic infrastructure and social services, increase business and employment opportunities, and improve the overall capacities of the sub-districts to effectively cater for the needs and demands of the people in their parts of the electorate.	District Administration	Member's Office BJDP&BPC	2013-2017 and continuing		Significant improvement has been made to basic infrastructure, facilities & service to all the three main urban centres, the sub-centres, as well as the six LLGs	Overall improvement to quality of life for all with improved level of services
	i. Morobe Provincial Government to also support the establishment of the Growth Centres at Wau and Bulolo at the cost of K15.m between 2013 and 2017.	MPG	District Administration Member's Office BJDP&BPC	2013-2017	K15.m	Funds have been made available for that purpose and expended	Decentralization of infrastructure, services and facilities for equal access & benefit by all.
	ii. Must work in partnership to share cost with MPG refer to above 3.11 commercial centers						
	i) The main focus of the capacity building exercise that have been highlighted so far in this plan during the next five years will be on the six LLGs, in terms of up-scaling their capacities to effectively perform their transferred functions in close consultation and collaboration with their district level counterparts.	District Administration	Member's Office BJDP&BPC	2013-2017 and continuing		Significant improvement has been made to basic infrastructure, facilities & service to all the six LLGs	Overall improvement to the capacity to all 6 LLGs to effectively plan, organize and deliver their programmes and services
	ii) Prepare an MOA/MOU for the LLGs to sign with the local MP and the District Administration to formalize and take ownership of the various programmes and services, as well as properties and assets which are to be parked at that level.	Consultant	-District Administration Member's Office - All 6 LLGs BJDP&BPC	2014		When all the parties concerned have signed the MOA/MOU	Improved working relationship between the parties concerned, but more so to ensure LLGs take on the responsibilities and ownership of all ASSETTS provided to them through this Plan.
	iii) The parties to the MOA/MOU will be represented by the following: <ul style="list-style-type: none">• JDP&BPC – represented by the	-District Administration	Member's Office - All 6 LLGs BJDP&BPC	2014		When all the parties concerned have signed the MOA/MOU	Improved working relationship between the parties concerned, but more so to ensure LLGs take on the responsibilities and

SECTOR	ACTIVITY	LEAD AGENCY	OTHER STAKE HOLDERS	TIME - FRAME	BUDGET (K)	COMPLETION INDICATORS	ANTICIPATED OUTCOMES/ OUTPUTS
3.32 Disaster & Emergency Services	local MP and the District Administrator <ul style="list-style-type: none"> LLGs – to be represented by the LLG Presidents and LLG Manager 						ownership of all ASSETTS provided to them through this Plan.
	iv) Failure to comply with the MOA/MOU by taking ownership and responsibilities as stated in the MOA/MOU will result in the JDP&BPC taking full ownership and control as specified under the MOA/MOU	-District Administration	Member's Office - All 6 LLGs BJDP&BPC	2014	K10,000	When all the parties concerned have signed the MOA/MOU	Improved working relationship between the parties concerned, but more so to ensure LLGs take on the responsibilities and ownership of all ASSETTS provided to them through this Plan.
	i) Establishment of Regional Disaster and Emergency Response Units by the MPG at the cost of K500,000 in 2015 Must work in partnership to share cost with MPG	Provincial Disaster and Emergency Office	District Administration -Member's Office	2015	K 500,000	When the Emergency Response Units have been fully established	To ensure of prompt response to disaster & Emergency situations in the district

ANTICIPATED IMPLEMENTATION FLOWS OF THE DEVELOPMENT PLAN 2013-2017



4. IMPLEMENTATION SCHEDULE 2013 - 2017

The Implementation Schedule has been highlighted with different colours to represent the different sectors and correspond to the sectoral colours in the Implementation Matrix above. This was done purposely for ease of reference by the implementers and potential sponsors of various activities covered in the plan.

SECTOR AND ACTIVITY	YEAR(S) OF IMPLEMENTATION					COMMENTS
	2013	2014	2015	2016	2017	
<u>Education:</u>						
i) Continue Balob Teachers College Support programme at K200,00 annually						
ii) Continuous support to one student per 110 wards to attend Bulolo Technical School						
iii) Bulolo Technical College Corporate Sponsorship Programme to continue						
iv) Regular screening, selection and monitoring of the sponsorship by the district education officers						
v) Extension of Bulolo Technical College at the cost of K1.8m (funding budgeted under the MPG budget)						The colour green represents activities to be funded under the MPG budget
vi) Construction of the Buang High School also at the cost of K1.8m (funding budgeted under the MPG budget)						
vii) Also construction of the Garaina High School at the same cost of K1.8m. (funding budgeted under the MPG budget)						
viii) Maintenance of Grace memorial High School by the MPG at the cost of K200,000						
ix) Construction of new High School at Baiyune by MPG at the cost of K1.m.						
x) Maintenance of Bulolo Vocational School also by the MPG at the cost K2.m.						

YEAR(S) OF IMPLEMENTATION

SECTOR AND ACTIVITY	2013	2014	2015	2016	2017	COMMENTS
xi) Replacement of the current fleet of three vehicles after three years in 2015						
xii) K1.2m allocated for teacher training programme at all levels in five years						
Health:						
i) Recruitment and Training of 1 Village Health Volunteer for each LLG						
ii) Also recruitment and training of Village Birth Attendant for each of the six LLGs.						
iii) Continued support for Mobile Health Programme, including disbursement of medical supplies and two personnel each to Mumeng, Buang, Watut and Wau Rural Local Level Governments.						
iv) Provide vehicles for health related work in Buang, Mumeng, Watut Rural, Wau Rural & outskirts of Wau/Mumeng townships						
v) Rehabilitation of health centres in Wau, Mumeng and Bulolo and equip them with Ex-ray Machines, Sterilizers, and Bio-Chemistry machines.						
vi) Initiate sponsorship of Private Doctors if public health doctors are not available to be based in either Bulolo or Wau townships to offer consultations to patients. The cost will be subsidized by the district.						
vii) Roll out major eye operation programme in the district, including 1000 glasses per LLG totalling 6,000 glasses overall. The project will also include diagnosis and operation. And Wau Rural will have theirs done in Wau town, Waria in Garaina, Watutu in Bulolo, and Mumeng and Buang in Mumeng town respectively.						

YEAR(S) OF IMPLEMENTATION

SECTOR AND ACTIVITY	2013	2014	2015	2016	2017	COMMENTS
viii) Provide support to TB & HIV/AIDS Programme						
ix) A population based studies on TB & HIV/AIDS to be conducted to determine the actual population infected an affected by the two killer diseases						
x) Installation of Ex-ray for TB cases as well as TB Test kits and treatment						
xi) Also installation of HIV/AIDS kits and treatment						
xii) Stockpile adequate supplies for TB & HIV/AIDS medication						
xiii) Support NGOs and relevant organisations to conduct awareness programmes on TB & HIV/AIDS						
xiv) Recruitment of a team of health workers comprising retired HEOs, two nurses and two drivers to man and operate the districts mobile Health Programme.						
xv) Installation of Morgues to the two health centres (Wau and Mumeng), as well as to LLGs that have access to adequate power supply.						
xvi) Continuous supply of Ambulances to LLGs that needed them.						

YEAR(S) OF IMPLEMENTATION

SECTOR AND ACTIVITY	2013	2014	2015	2016	2017	COMMENTS
xvii) Upgrade the Bulolo Health Centre to Rural Hospital standard by the MPG at the cost k1.m.						
xviii) Maintenance of the Wau Health Centre also by the MPG at the cost of K300,000						
xix) Provide support to TB & HIV/AIDS Programme by the National Aids Council. i) Support NGOs and relevant organisations to conduct awareness programmes on TB & HIV/AIDS in consultation with the National Aids Council						
<u>Comm. Dev. Soc. Welfare Services:</u>						
i) Formation of Youth Associations and youth groups						
ii) Formation of Women in Business Association						
iii) Formation of an Association for Persons With Disabilities						
iv) Purchasing of 500 Sewing Machines for women, provide training then distribution of the sewing machines						
v) Support Women in Small-Scale Business activities						
vi) Provide training for women in agriculture, food processing, sewing and honey bee farming						
vii) Instigate Social Protection Programmes for the Elderly 60 years and over with an initial support of K200 per person per annum or K50 per quarter						
viii) Also instigate a Community Micro Credit Scheme for village and community groups in the district in the next five years.						
<u>Law & Order:</u>						
i) Three vehicles already purchased and delivered to Wau, Mumeng and Bulolo						

YEAR(S) OF IMPLEMENTATION

SECTOR AND ACTIVITY	2013	2014	2015	2016	2017	COMMENTS
ii) Recruitment and Training of ten (10) police personnel per LLG						
iii) Wau, Bulolo and Mumeng to have extra three (3) police personnel						
iv) Purchase and delivery of ten (10) extra vehicle for hot spot areas of the district in Wau, Mumeng and Bulolo						
v) Increase police personnel to ninety (90) in the hot spot areas of the district						
vi) Establish new Police stations at Buang, watut, Biaru and Garaina						
vii) Equip police personnel with firearms and ammunition						
viii) Improve operational capacity of Police Prosecution Unit at Wau and Bulolo, including purchasing of new vehicles						
<u>The Courts System:</u>						
i) Support Magisterial Services to attend to or conduct LLG court hearings						
ii) Provide support Village Court Magistrates in all LLGs						
iii) Supply Uniforms and Vehicles to Village Courts operating in all six LLGs						
iv) Build join police station/village houses at all six LLGs in the electorate						
v) Include Court Rooms as integral part of the new police station development programme for all the six LLGs.						
vi) Also include and budget for the Annual Court Circuit Scheduled prepared by the District Court Magistrate at the cost of K10,000 per circuit by 10 circuits amounting to K100,000 per year.						

YEAR(S) OF IMPLEMENTATION

SECTOR AND ACTIVITY	2013	2014	2015	2016	2017	COMMENTS
vii) Provide support to Village Court Magistrates in all LLGs						
viii) Supply Uniforms and Vehicles to Village Courts operating in all six LLG						
ix) Build join police station/village court houses at all six LLGs in the electorate						
x) Improve operational capacity of Police Prosecution Unit at Wau and Bulolo, including purchasing of new vehicles						
<u>Correctional Services:</u> i) A 300 man new CS Rural Lockup facilities to be built at Zenag after the design has been approved by the relevant authorities.						
<u>Culture and Tourism:</u> i) Encourage and stage Cultural and Music Festivals on rotational basis in the three main sub-district of Bulolo, Wau and Mumeng in the years ahead.						
<u>Agriculture, Livestock and Wildlife:</u> i) Fully establish agriculture tethering programmes, eg. Honey bee from Goroka, then hand it over to the LLGs						
ii) Also tether cattle, ducks and goats before passing it on the LLGs						
iii) Provide the project with support vehicles or motorbikes						
iv) Establish coffee nurseries then redistribute seedlings to the LLGs						

YEAR(S) OF IMPLEMENTATION

SECTOR AND ACTIVITY	2013	2014	2015	2016	2017	COMMENTS
v) Continue distribution of coffee bulpers to the LLGs						
vi) Instigation of Annual Agricultural Shows						
vii) Waria Valley Integrated Development Project to be funded by the MPG in 2015 at the cost of k1.m, together with the establishment of the Waria Valley Special Purpose Authority						
<u>Fisheries:</u>						
i) Tethering fish fingerlings then distribute to all the LLGs						
ii) A revised training programme for existing fish farmers to be established as soon as possible						
iii) Create new fish ponds and training of new fish farmers						
iv) Purchase and supply new fingerlings to new fish farmers						
v) Engagement of a full time excavator to dig new fish ponds						
vi) Establishment of a Bulolo Fish Farmers Association						
vii) Appoint a new District Fish Farming Co-ordinator						
viii) Assist the Bulolo Fish Farmers Association to access fish markets.						

YEAR(S) OF IMPLEMENTATION

SECTOR AND ACTIVITY	2013	2014	2015	2016	2017	COMMENTS
<u>Forestry and Logging:</u>						
i) Purchase and deliver Walkabout Sawmills to all LLGs						
ii) In addition Ward Areas that may play host to infrastructure such as schools, aid posts, community halls, or village housing schemes shall be considered to own a chainsaw or a walkabout saw mill to process and establish infrastructure Projects						
iii) Any potential areas that have large scale forestry operation can be supported by the district with preparation of their LLGs and linking with Forestry Department for development						
iv) Establish an installation team comprising a Manager or Team Leader, a Driver and two Casuals.						
v) Any potential areas that have large scale forestry operation can be supported by the district with preparation of their ILGs and linking with Forestry Department for development.						
vi) Establish an Installation Team comprising a Manager or Team Leader, a Driver and two Casuals.						

YEAR(S) OF IMPLEMENTATION

SECTOR AND ACTIVITY	2013	2014	2015	2016	2017	COMMENTS
<u>Mining:</u>						
i) Conduct Training on Safe Mining Methods						
ii) Supply Water Pumps and Hoses for organised family units that are engaged in Alluvial mining activities.						
<u>Down-Stream Processing:</u>						
i) Establish a Coffee Mill during the next 5-10 years						
<u>Commerce and Trade:</u>						
i) Develop and convert Bulolo, Wau and Mumeng into major commerce and trade centres of the district in the next five year period. The programme will start with Wau then on to Mumeng at an estimated cost of between K5.m-K6.m commencing in 2014.						
ii) Build sub-commercial centres at Buang, Watut, Biar and Gara-ina for the same purpose						
iii) Supply electronics to bolster business activities such as computers, freezers and metal fabrication						
iv) Construct concrete pavement and install street lighting at all private commercial establishments						
<u>Banking Facilities and Services:</u>						
i) Installation of ATM & EFTPOS machines at selected locations in the three centres						
ii) Establishment and installation of E-Banking systems and services also at the three main centres in the district.						
iii) Establishment and installation of new banking facilities (ie sub-branches) at the three major centres						

YEAR(S) OF IMPLEMENTATION

SECTOR AND ACTIVITY	2013	2014	2015	2016	2017	COMMENTS
services also at the three main centres in the district.						
<u>General Merchandising:</u> i) The proposed Commercial Centres will house more commercial activities which include supermarkets and other general merchandising services in the three main urban centres, as well the sub-district centres at Buang, Watut, Biaru and Garaina						
<u>Marketing Facilities & Services:</u> i) Major improvements to the existing facilities will be made to increase the capacities to cater for the increasing demands.						
<u>Parks & Reserves:</u> i) In consultation with the Environment and Conservation Department, re-establish and re-furbish the MC Adams Park						
<u>Land Use Planning:</u> i) Funding to be made available to meet Survey Costs for development projects in the district.						
<u>Town Development Plan & Zoning:</u> i) Rezoning and updating of Survey Plans, Land Files, etc. to be conducted at Bulolo, Wau and Mumeng.						
<u>Customary Land:</u> i) Find Land Court Magistrate and base them at Bulolo to fast-track outstanding land court cases						

YEAR(S) OF IMPLEMENTATION

SECTOR AND ACTIVITY	2013	2014	2015	2016	2017	COMMENTS
ii) Assist clans that chose to do ILGs at the cost of K2,000 per clan in the next five years.						
<u>Building Construction:</u>						
i) Build three new Commercial Centres at Bulolo, Wau and Mumeng at the cost of K6.m.						
ii) Relocation and housing of all administration, business houses, police operational base, sub-branches of banks and other important activities in the three new Commercial Centres.						
<u>Roads and Transport:</u>						
i) Construction of new road to Garaina Sub-district at a total estimated cost of about K6m over the three year period.						
ii) A 10 ton bulldozer has already been engaged for the road project						
iii) Purchase and supply bulldozers, ambulance, tractors with their relevant attachments and accessories to all LLGs, except for Waria LLG as it has no road access at present.Watut						
iv) Purchasing and re-fleeting of capital works equipment such as tractors, bulldozers, and tipper trucks after every three years						
v) Construction of the Wagau to Bumatu road which will connect to the Huon Gulf District via Salamaua						
vi) Construction of the road connecting Middle Watut to Lower Watut						
vii) Construction of the road connecting Baiune to Baine						

YEAR(S) OF IMPLEMENTATION

SECTOR AND ACTIVITY	2013	2014	2015	2016	2017	COMMENTS
viii) Construction of the road connecting Bapi to Garaina station						
ix) Construction of the road connecting Hidden Valley Mine to Degadu						
x) Construction of the road from Wapi to Yanda						
xi) Construction of the road connecting Yanda to Middle Watut						
xii) Maintenance & Rehabilitation of Wau-Bulolo Road by MPG at the cost of k150,000						
xiii) Sealing of Bulolo and Wau townships by MPG at the cost of K2.m.						
xiv) Maintenance and Rehabilitation of Wau-Kasengare road also by the MPG at the cost of k430,000.						
Bridges (including Foot Bridges)						
i) Kumalo by-pass already under construction at the cost of K14m.						
ii) Patep/Mumeng Bridge also under construction at the cost of K660,000.						
iii) Latep/Lakiu Bridge for K1.3m						
iv) Wara Wau Greek bridge for K1.5m.						
v) Construct five (5) Foot bridges for every LLG in the district over the next five years						
vi) Replacement of Wara Wau bridge by MPG at the cost of K700,000						
vii) A new bridge at Gobiak by MPG at the cost of K500,000						
viii) Also a new bridge at Biar y MPG for K700,000						

YEAR(S) OF IMPLEMENTATION

SECTOR AND ACTIVITY	2013	2014	2015	2016	2017	COMMENTS
i) Empower business houses to maintain all existing airstrips throughout the district over the next five years						
<u>Housing:</u>						
i) Over the next five years new Housing Scheme will be established for Police and Health workers in all the rural LLGs of the district.						
<u>Electricity:</u>						
Under the Rural electrification Programme, install High Voltage Power lines to the following areas;						
i) Baiyun to Timini Highway						
ii) Baiyun to Newcamp (Bulolo town)						
iii) Sambie to Middle-Watut						
iv) Paintop to Grace Memorial School						
v) Latep to Banianda						
vi) PartepBunanong to Bugiou						
vii) Waku to Biaru and on to Garaina						
Under the Service lines (MSK) Units, the following are to happen;						
i) Negotiate for connections to individuals and business communities along the road the above list of HVPU works get underway						
ii) Provision of Freezer supplies for shop owners						

YEAR(S) OF IMPLEMENTATION

SECTOR AND ACTIVITY	2013	2014	2015	2016	2017	COMMENTS
iii) Emergence of metal fabrication work and associated opportunities						
iv) Installation of Hydro Power for Garaina						
<u>Telecommunication (Telikom) Services:</u>						
i) Install EMTV and KUNDU 2 Towers at Bulolo urban, Wau urban and Mumeng urban centres, as well as in Watut LLG, Garaina LLG, and Buang LLG respectively.						
ii) Continue to support the Digicel Foundation programme, as well as the Telikom Vista programmes respectively and roll out to areas not currently covered by the two TV networks						
iii) Establish Bulolo District FM radio station in partnership with NBC to be located at Mumen. This project will be funded in the government's 2014 budget						
iv) Continue support to Radio Morobe to remain focus on broadcasting activities of Bulolo District						
<u>Postal Services:</u>						
i) As for the future, the postal services will be incorporated into the Commercial Centres as part of the CP developments programme.						
<u>Water Supply:</u>						
i) Develop five (5) Gravity-fed water supplies to each of the six LLGs during the next five years						
ii) Engage ADRA and other aid donors such as European Union under a joint partnership arrangement which has worked successfully so far.						

YEAR(S) OF IMPLEMENTATION

SECTOR AND ACTIVITY	2013	2014	2015	2016	2017	COMMENTS
<u>Sewerage & Sanitation:</u>						
i) To remain as National Function under Water Board						
<u>Garbage Collection & Disposal:</u>						
i) To remain as urban LLG function						
ii) The District will also assist all LLGs to establish and manage garbage disposal services as well as provide refuse drums at every outlet for reasonable income generating rates.						
<u>District Headquarters Improvement:</u>						
i) Bulolo to remain as the district headquarters of the district						
ii) Construction of the new Commercial Centre and relocate the district administration to the new complex						
iii) Morobe Provincial Government to also support the establishment of the Growth Centres at Wau and Bulolo at the cost of K15.m between 2013 and 2017.						
<u>Sub-Districts:</u>						
i) Retain Wau and Mumeng as the sub-district urban centres of the electorate						
ii) Improve basic infrastructure and social services, increase business and employment opportunities, and improve the overall capacities of the sub-districts to effectively cater for the needs and demands of the people in their parts of the electorate						
iii) Build sub-commercial centres in all the sub-districts						

YEAR(S) OF IMPLEMENTATION

SECTOR AND ACTIVITY	2013	2014	2015	2016	2017	COMMENTS
<u>Local Level Governments:</u> i) The main focus of the capacity building exercise that have been highlighted so far in this plan during the next five years will be on the six LLGs.						
ii) These include in areas such as the capital works programmes, new roads, new bridges (including foot bridges), High Voltage Power Supply, Water Supplies, increased police personnel, agricultural tethering programmes, installation of new telecommunication facilities, and other priority programmes and services as outlined in the plan.						
iii) Prepare an MOA/MOU for the LLGs to sign with the local MP and the District Administration to formalize and take ownership of the various programmes and services, as well as properties and assets which are to be parked at that level.						
<u>Disaster and Emergency Services</u> i) Establishment of Regional Disaster and Emergency Response Units by the MPG at the cost of K500,000 in 2015						

5. COST ESTIMATES 2013-1017 BY SECTOR

The Annual Project Cost Estimates 2013-2017 by Sector

ANNUAL COST ESTIMATES (K'000)

	2013	2014	2015	2016	2017	TOTAL	SOURCE
<u>Education:</u>	20	20	20	20	20	K100	DSIP
i) Balob Teachers College Support programme							
ii) Bulolo Technical College Corporate Sponsorship	180	180	180	180	180	900	DSIP
iii) Balob Teachers College Corp. Sponsorship Program	180	180	180	180	180	900	DSIP
iv) Extension of Bulolo Technical College at the cost of K1.8m (funding budgeted under the MPG budget)	-	900	900	-	-	K1.8m	MPG
v) Construction of the Buang High School also at the cost of K1.8m(funding budgeted under the MPG budget)	-	900	900	-	-	K1.8m	MPG
vi) Also construction of the Garaina High School at the same cost of K1.8m. (funding budgeted under the MPG budget)	-	900	900	-	-	K1.8m	MPG
vii) Maintenance of Grace memorial High School by the MPG at the cost of K200,000	-	100	100	-	-	200	MPG
viii) Construction of new High School at Baiyune by MPG at the cost of K1.m.	-	500	500	-	-	K1.m	MPG
xv) Maintenance of Bulolo Vocational School also by the MPG at the cost K2.m.	-	K1.m	K1.m	-	-	K2.m	MPG
xvi) K1.2m allocated for teacher training programme at all levels in five years	240	240	240	240	240	K1.2m	DSIP
<u>Health:</u>							
i) Recruitment and Training of 1 Village Health Worker for each LLG	-	25	25	-	-	50	DSIP
ii) Also recruitment and training of Village Bed Attendant for each of the six LLGs.	-	25	25	-	-	50	DSIP
iii) Continue support for Mobile Health Programme, including disbursement of medical supplies and personnel		375	375	375	375	K1.5m	DSIP
iv) Provide vehicles for health related work in Buang, Mumeng, Watut Rural, Wau Rural & outskirts of Wau/Mumeng townships		200	200	200	200	800	DSIP
v) Rehabilitation of health centres in Wau, Mumeng and Bulolo and equip them with Ex-ray Machines, Sterilizers, and Bio-Chemistry machines.		250	250	250	250	K1.0m	DSIP

	2013	2014	2015	2016	2017	TOTAL	SOURCE
vi) Initiate sponsorship of Private Doctors if public health doctors are not available to be based in either Bulolo or Wau townships to offer consultations to patients. The cost will be subsidized by the district.		150	150	150	150	600	DSIP
vii) Roll out major eye operation programme in the district, including 1,000 glass per LLG totalling 6,000 glasses overall. The project will also include diagnosis and operation of people of Wau Town. And Wau Rural will have theirs done in Wau town, Waria in Garaina, Watut in Bulolo, and Mumeng and Buang in Mumeng town respectively.	76	76	76	76	76	380	DSIP
viii) Provide support to TB & HIV/AIDS Programme		125	125	125	125	500	DSIP
xv) A population based studies on TB & HIV/AIDS to be conducted to determine the actual population infected an affected by the two killer diseases		200	-	-	-	200	DSIP
x) Installation of Ex-ray for TB cases as well as TB Test kits and treatment		50	-	-	-	50	DSIP
xi) Also installation of HIV/AIDS kits and treatment		125	125	125	125	500	DSIP
xii) Stockpile adequate supplies for TB & HIV/AIDS medication						Same as above	DSIP
xiii) Recruitment of a team of health workers comprising retired HEOs, two nurses and two drivers to man and operate the districts mobile Health Programme.						100	DSIP
xiv) Installation of Morgues to the three health centres, as well as to LLGs that have access to adequate power supply.		250	250	250	250	K1.M	DSIP
xv) Upgrade the Bulolo Health Centre to Rural Hospital standard by the MPG at the cost k1.m.		250	250	250	250	K1.m	MPG
xvi) Maintenance of the Wau Health Centre also by the MPG at the cost of K300,000		75	75	75	75	300	MPG
xvii) Provide support to TB & HIV/AIDS Programme by the National Aids Council.		25	25	25	25	100	DSIP
xviii) Support NGOs and relevant organisations to conduct awareness programmes on TB & HIV/AIDS in consultation with the National Aids Council		25	25	25	25	100	DSIP
<u>Comm. Dev. Soc. Welfare Services:</u>							
i) Formation of Youth Associations and youth groups		20	-	-	-	20	DSIP
ii) Formation of Women in Business Association		20	-	-	-	20	DSIP

	2013	2014	2015	2016	2017	TOTAL	SOURCE
iii) Formation of an Association for Persons With Disabilities		20	-	-	-	20	DSIP
iv) Purchasing of 500 Sewing Machines for women, provide training then distribute to them		75	75	-	-	150	DSIP
v) Support Women in Small-Scale Business activities		50	-	-	-	50	DSIP
vi) Provide training for women in agriculture, food processing, sewing and honey bee farming		50	-	-	-	50	DSIP
vii) Instigate Social Protection Programmes for the Elderly 60 years and over with an initial support of K200 per person per annum or K50 per quarter		100	100	-	-	200	DSIP
viii) Initiate a Community Micro Credit Scheme for community groups in the district in the next 5 years.		50	50	-	-	100	DSIP
<u>Law & Order – Police</u>							
i) Recruitment and Training of ten (10) police personnel per LLG		50	50	-	-	100	DSIP
ii) Replacement of aging vehicles to cover Mumeng LLG, Buang LLG, Watut LLG, Wau Rural LLG, Waria LLG, Wau police station, Bulolo police station, Mumeng police station, and for hot spots at Wau and Bulolo Markets. A total of ten new police vehicles at a cost of K1.5m.	750	750	-	-	-	K1.5m	DSIP
iii) Establish new police stations at Buang, Watut, Biaru and Garaina together with a ten-man police barracks for each police station		37.5	37.5	37.5	37.5	150	DSIP
iv) Equip police personnel with firearms and ammunition for every vehicle purchased		100	100	100	100	400	DSIP
v) Improve operational capacity of Police Prosecution Unit at Wau & Bulolo, including new Vehicles		100	-	-	-	100	DSIP
vi) Purchase and delivery of ten (10) extra vehicle for hot spot areas of the district in Wau, Mumeng and Bulolo		250	250	250	250	K1.m	DSIP
vii) Wau, Bulolo and Mumeng to have extra three (3) police personnel		100	-	-	-	100	DSIP
viii) Increase police personnel to ninety (90) in the hot spot areas of the district		75	75	75	75	300	DSIP
<u>Correctional Services</u>							
i) A 300 man new CS Rural Lockup facilities to be built at Zenag after the design has been approved by the relevant authorities.		50	50	-	-	100	DSIP
ii) Negotiate for rehabilitation school to be set up for the inmates		50	50	-	-	100	DSIP

	2013	2014	2015	2016	2017	TOTAL	SOURCE
iii) Negotiate community works programme for low risk prisoners		25	25	-	-	50	DSIP
<u>The Court Services</u>							
i) Support Magisterial Services to attend to or conduct LLG court hearings		62.5	62.5	62.5	62.5	250	DSIP
ii) Provide support to Village Court Magistrates in all LLGs		25	25	-	-	50	DSIP
iii) Supply Uniforms and Vehicles to Village Courts operating in all six LLGs		25	25	-	-	200	DSIP
iv) Build join police station/village houses at all six LLGs in the electorate		500	500	500	500	K2.m	DSIP
v) Include Court Rooms as integral part of the new police station development programme for all the six LLGs.		150	150	150	150	600	DSIP
vi) Also include and budget for the Annual Court Circuit Scheduled prepared by the District Court Magistrate at the cost of K10,000 per circuit by 10 circuits amounting to K100,000 per year.	100	100	100	100	100	500	DSIP
vii) Provide support to Village Court Magistrates in all LLGs		100	100	100	100	400	DSIP
<u>Culture and Tourism:</u>							
i) Encourage and stage Cultural and Music Festivals on rotational basis in the three main sub-district of Bulolo, Wau and Mumeng in the years ahead.		125	125	125	125	500	DSIP
ii) Provide funding for increased tourism activities in the district						300	
<u>Agriculture, Livestock and Wildlife:</u>							
i) Fully establish agriculture tethering programmes, eg. Honey bee from Goroka, then hand it over to the LLGs	46	46	46	46	46	K1.5m	DSIP
ii) Also tether cattle, ducks and goats before passing it on the LLGs	-	37.5	37.5	37.5	37.5	Refer above	DSIP
iii) Provide the project with support vehicles or motorbikes	-	-	-	-	-	Refer above	DSIP
iv) Establish coffee nurseries then redistribute seedlings to the LLGs	-	50	50	50	50	200	DSIP
v) Continue distribution of coffee bulpers to the LLGs	-	-	-	-	-	Reminder	DSIP
vi) Instigation of Annual Agricultural Shows	-	-	-	-	-	Refer to above	DSIP
vii) Waria Valley Integrated Development Project to be funded by the MPG in 2015 at the cost of k1.m, together with the establishment of the Waria Valley Special Purpose Authority	-	-	K1.m	-	-	K1.m	MPG

	2013	2014	2015	2016	2017	TOTAL	SOURCE
<u>Fisheries:</u>							
i) Tethering fish fingerlings then distribute to all the LLGs	-	375	375	375	375	K1.5m	
ii) A revised training programme for existing fish farmers to be established as soon as possible	-	-	-	-	-	Refer to above	DSIP
iii) Create new fish ponds and training of new fish farmers	-	-	-	-	-	Refer to above	DSIP
iv) Purchase and supply new fingerlings to new fish farmers	-	-	-	-	-	Refer to above	DSIP
v) Engagement of a full time excavator to dig new fish ponds	-	-	-	-	-	Refer to above	DSIP
vi) Establishment of a Bulolo Fish Farmers Association	-	25	-	-	-	25	DSIP
vii) Appoint a new District Fish Farming Co-ordinator	-	200	-	-	-	200	DSIP
viii) Assist the Bulolo Fish Farmers Association to access to fish markets.	-	-	-	-	-	Refer to above (v)	DSIP
<u>Forestry and Logging:</u>	-	125	125	125	125	500	DSIP
i) Purchase and deliver Walkabout Sawmills to all LLGs							
ii) In addition Ward Areas that may play host to infrastructure such as schools, aid posts, community halls, or village housing schemes shall be considered to own a chainsaw or a walkabout saw mill to process and establish infrastructure.	-	62.5	62.5	62.5	62.5	250	DSIP
iii) Any potential areas that have large scale forestry operation can be supported by the district with preparation of their LLGs and linking with Forestry Department for development	-	500	500	500	500	K2m (Incl cement mixer)	DSIP
iv) Establish an installation team comprising a Manager or Team Leader, a Driver and two Casuals.	-	-	-	-	-	Refer to above	DSIP
v) Any potential areas that have large scale forestry operation can be supported by the district with preparation of their ILGs and linking with Forestry Department for development.	-	50	50	50	50	200	DSIP
<u>Mining:</u>	-	75	75	75	75	300	DSIP
i) Conduct Training on Safe Mining Methods							
ii) Supply Water Pumps and Hoses for organised family units that are engaged in Alluvial mining activities.	-	250	250	250	250	K1m	DSIP
<u>Down-Stream Processing:</u>	-	-	-	-	-	With Partners hip & costs TBA	DSIP
i) Establish a Coffee Mill during the next 5-10 years							

	2013	2014	2015	2016	2017	TOTAL	SOURCE
<u>Commerce and Trade:</u>							
i) Develop and convert Bulolo, Wau and Mumeng into major commerce and trade centres of the district in the next five year period. The programme will start with Wau then on to Mumeng at an estimated cost of between K12.m commencing in 2014.	-	K3m	K3m	K3m	K3m	K12.m	DSIP
ii) Build sub-commercial centres at Buang, Watut, Biaru and Garaina for the same purpose		500	500	500	500	K2.m	DSIP
iii) Supply electronics to bolster business activities such as computers, freezers and metal fabrication	-	375	375	375	375	K1.5m	DSIP
iv) Construct concrete pavement and install street lighting at all private commercial establishments	-	500	500	500	500	K2m	DSIP
<u>Banking Facilities and Services:</u>	-	-	-	-	-	Refer to Commerce & Trade (i) above	DSIP
i) Installation of ATM & EFTPOS machines at selected locations in the three centres	-	-	-	-	-	Refer to Commerce & Trade (i) above	DSIP
ii) Establishment and installation of E-Banking systems and services also at the three main centres in the district.	-	-	-	-	-	Refer to Commerce & Trade (i) above	DSIP
iii) Establishment and installation of new banking facilities (ie sub-branches) at the three major centres	-	-	-	-	-	Refer to Commerce & Trade (i) above	DSIP
iv) Establishment and installation of E-Banking systems and services at the three main centres in the district	-	25	25	25	25	100	DSIP
<u>General Merchandising:</u>							
i) The proposed Commercial Centres will house more commercial activities which include supermarkets and other general merchandising services in the three main urban centres, as well the sub-district centres at Buang, Watut, Biaru and Garaina	-	150	150	150	150	600	DSIP
<u>Marketing Facilities & Services:</u>							
i) Major improvements to the existing facilities will be made to increase the capacities to cater for the increasing demands.	-	-	-	-	-	In partnership with MPG & LLG costs TBA	DSIP
<u>Parks & Reserves:</u>							
i) In consultation with the Environment and Conservation Department, re-establish and re-furbish the MC Adams Park	-	25	-	-	-	25	DSIP

	2013	2014	2015	2016	2017	TOTAL	SOURCE
<u>Land Use Planning:</u>							
i) Funding to be made available to meet Survey Costs for development of projects in the district.	-	500	500	500	500	K2m	DSIP
<u>Town Development Plan & Zoning:</u>							
i) Rezoning and updating of Survey Plans, Land Files, etc. at Bulolo, Wau and Mumeng.	-	-	-	-	-	Refer to above	DSIP
<u>Customary Land:</u>							
i) Find Land Court Magistrate and base them at Bulolo to fast-track outstanding land court cases	-	150	150	-	-	300	DSIP
ii) Assist clans that chose to do ILGs at the cost of K2,000 per clan in the next five years.	52	52	52	52	52	260	DSIP
<u>Building Construction:</u>							
i) Build three new Commercial Centres at Bulolo, Wau and Mumeng at the cost of K6.m.	-	-	-	-	-	K12m Refer to above same costing	DSIP
ii) Relocation and housing of all administration, business houses, police operational base, sub-branches of banks and other important activities in the three new Commercial Centres	-	-	-	-	-	Refer to above	DSIP
<u>Roads and Transport:</u>							
i) Construction of new road to Garaina Sub-district at a total estimated cost of about K6m over the three years	K2.m	K2.m	K2.m	-	-	K6m	DSIP
ii) A 10 ton bulldozer has already been engaged for the road project	-	-	-	-	-	Refer to above	DSIP
iii) Purchase and supply bulldozers, ambulance, tractors with their relevant attachments and accessories to all LLGs, except for Waria LLG as it has no road access.	K2m	K2m	K2m	K2m	K2m	K10m	DSIP
iv) Purchasing and re-fleeting of capital works equipment such as tractors, bulldozers, and tipper trucks after every three years	-	-	-	200	200	400	DSIP
v) Construction of the Wagau to Bumatu road which will connect to the Huon Gulf District via Salamaua	-	K2m	K2m	K2m	K2m	K8m	DSIP
vi) New road connecting Middle Watut to Lower Watut	-	125	125	125	125	500	DSIP
vii) Construction of the road connecting Baiune to Baini	-	62.5	62.5	62.5	62.5	250	DSIP
viii) Construction of the road connecting Bapi to Garaina	-	62.5	62.5	62.5	62.5	250	DSIP
ix) New road connecting Hidden Valley Mine to Degadu	-	62.5	62.5	62.5	62.5	250	DSIP
x) Construction of the road from Wapi to Yanda	-	62.5	62.5	62.5	62.5	250	DSIP
xi) New road connecting Yanda to Middle Watut	-	62.5	62.5	62.5	62.5	250	DSIP

	2013	2014	2015	2016	2017	TOTAL	SOURCE
xii) Maintenance & Rehabilitation of Wau-Bulolo Road by MPG at the cost of k150,000		37.5	37.5	37.5	37.5	150	MPG
xiii) Sealing of Bulolo and Wau townships by MPG at the cost of K2.m.		500	500	500	500	K2.m	MPG
xiv) Maintenance and Rehabilitation of Wau-Kasengare road also by the MPG at the cost of k430,000.		107.5	107.5	107.5	107.5	430	MPG
<u>Bridges (including Foot Bridges):</u>							
i) Kumalo by-pass under construction at the cost of K1.4m.	280	280	280	280	280	K1.4m	DSIP
ii) Patep/Mumeng Bridge also under construction at the cost of K660,000.	132	132	132	132	132	660	DSIP
iii) Latep/Leklu Bridge for K1.3m		325	325	325	325	K1.3m	DSIP
iv) Wara Wau Greek bridge for K1.5m.		375	375	375	375	K1.5m	DSIP
v) Construct five (5) Foot bridges for every LLG in the district over the next five years	36.6	36.6	36.6	36.6	36.6	K2m	DSIP
vi) Replacement of Wara Wau bridge by MPG at the cost of K700,000		175	175	175	175	700	MPG
vii) A new bridge at Gobiak by MPG at the cost of K500,000		125	125	125	125	500	MPG
i) Also a new bridge at Biar y MPG for k700,000		175	175	175	175	700	MPG
ii) Darling Road Bridge (Wau Town) for K600,000		150	150	150	150	600	DSIP
iii) Ado Compound (Wau Town) for K600,000		150	150	150	150	600	DSIP
iv) Forestry College Bridge (Bulolo Town) for K600,000		150	150	150	150	600	DSIP
v) St Peter's Bridge (Bulolo Town) for K600,000		150	150	150	150	600	DSIP
vi) Wau (Wau Rural LLG) for K2m		500	500	500	500	K2.m	DSIP
vii) RB Bridge (Buang LLG) for K700,000		175	175	175	175	700	DSIP
viii)Koviak Bridge (.....) for K300,000		75	75	75	75	300	DSIP
<u>Airstrips:</u>							
i) Empower business houses to maintain all existing airstrips throughout the district over the next five years	-	50	50	50	50	200	DSIP
<u>Housing:</u>							
i) New Housing Scheme for Police and Health workers in all the rural LLGs of the district.	-	75	75	75	75	300	DSIP

	2013	2014	2015	2016	2017	TOTAL	SOURCE
<u>Electricity:</u>							
Under the Rural electrification Programme, install High Voltage Power lines to the following areas;							
i) Baiyun to Timini Highway	-	250	250	250	250	K1m	DSIP
ii) Baiyun to Newcamp (Bulolo town)	-	250	250	250	250	K1m	DSIP
iii) Sambie to Middle-Watut	-	250	250	250	250	K1m	DSIP
iv) Paintop to Grace Memorial School	-	250	250	250	250	K1m	DSIP
v) Latep to Banianda	-	250	250	250	250	K1m	DSIP
vi) Partep Bunanong to Bugiou	-	250	250	250	250	K1m	DSIP
vii) Waku to Biarui and on to Garaina	-	25	-	-	-	25	DSIP
Under the Service lines (MSK) Units, the following are to happen;	-	-	-	-	-	-	Reminder
i) Negotiate for connections to individuals and business communities along the road the above list of HVPU works get underway	-	-	-	-	-	-	Reminder
ii) Provision of Freezer supplies for shop owners	-	-	-	-	-	-	Reminder
iii) Emergence of metal fabrication work and associated opportunities	-	-	-	-	-	-	Reminder
iv) Installation of Hydro Power for Garaina	-	-	-	-	-	TBA	DSIP
<u>Telecommunication (Telikom) Services:</u>							
i) Install EMTV and KUNDU 2 Towers at Bulolo urban, Wau urban and Mumeng urban centres, as well as in Watut LLG, Garaina LLG, and Buang LLG respectively.	-	125	125	-	-	250	DSIP
ii) Continue support to Digicel Foundation as well as the Telikom Vista programmes respectively and roll out to areas not currently covered by the two TV networks	-	500	500	500	500	K2m	DSIP
iii) Establish Bulolo District FM radio station in partnership with NBC to be located at Mumen. This project will be funded in the government's 2014 budget	-	500	-	-	-	500	DSIP
iv) Continue support to Radio Morobe to remain focus on broadcasting activities of Bulolo District	-	25	25	25	25	100	DSIP
<u>Postal Services:</u>	-	-	-	-	-	Refer to CC Projects above	DSIP
i) As for the future, the postal services will be incorporated into the Commercial Centres as part of the CP development programme.	-	-	-	-	-	Refer to CC Projects above	DSIP

	2013	2014	2015	2016	2017	TOTAL	SOURCE
<u>Water Supply:</u>							
i) Develop five (5) Gravity-fed water supplies to each of the six LLGs during the next five years	100	100	100	100	100	500	DSIP
ii) Engage ADRA and other aid donors such as European Union under a joint partnership arrangement which has worked successfully so far.	100	100	100	100	100	500	DSIP
<u>Sewerage & Sanitation:</u>	-	-	-	-	-	-	NG
i) To remain as National Function under Water Board	-	-	-	-	-	-	DSIP
<u>Garbage Collection & Disposal:</u>							
i) To remain as urban LLG function	-	-	-	-	-	-	DSIP
ii) The District will also assist all LLGs to establish and manage garbage disposal services as well as provide refuse drums at every outlet for reasonable income generating rates.	-	-	-	-	-	TBA	DSIP
<u>District Headquarters Improvement:</u>	-	-	-	-		Reminder	DSIP
i) Bulolo to remain as the district headquarters.						Refer to above	DSIP
ii) Construction of the new Commercial Centre and relocate the district administration to the new complex						Refer to above	DSIP
iii) Morobe Provincial Government to also support the establishment of the Growth Centres at Wau and Bulolo at the cost of K15.m between 2013 and 2017.	K3.m	K3.m	K3.m	K3.m	K3.m	K15.m	MPG
<u>Sub-Districts:</u>	-	-	-	-		TBA	DSIP
i) Retain Wau and Mumeng as the sub-district urban centres of the electorate	-	-	-	-	-	Reminder	DSIP
ii) Improve basic infrastructure and social services, increase business and employment opportunities, and improve the overall capacities of the sub-districts to effectively cater for the needs and demands of the people in their parts of the electorate	-	-	-	-	-	Reminder	DSIP
iii) Build sub-commercial centres in all the sub-districts	-	-	-	-		Refer to above	DSIP
<u>Local Level Governments:</u>							
i) The main focus of the capacity building exercise that have been highlighted so far in this plan during the next five years will be on the six LLGs.	-	-	-		-	.Reminder	DSIP

	2013	2014	2015	2016	2017	TOTAL	SOURCE
a) LLGSIP K250,000 X 6 LLG's b) DSIP 250,000 X 6 LLG's	K1.5m K1.5m	K1.5m K1.5m	K1.5m K1.5m	K1.5m K1.5m	K1.5m K1.5m	K7.5m K7.5m	DSIP
iii) Prepare an MOA/MOU for the LLGs to sign with the local MP and the District Administration to formalize and take ownership of the various programmes and services, as well as properties and assets which are to be parked at that level. Failure to observe the MOA?MOU will result in withdrawal of services and equipment from the LLG concerned.	-	100	-	-	-	100	DSIP
<u>Disaster and Emergency Services</u>							
i) Establishment of Regional Disaster and Emergency Response Units by the MPG at the cost of K500,000 in 2015	-	-	500	-	-	500	MPG

6. MONITORING, EVALUATION AND REDEVELOPMENT

6.1 Monitoring

The effective implementation and achievement of the results of this project plan can only materialize with proper monitoring of its implementation throughout the five year period. In that context, four levels of monitoring mechanisms are recommended, which include the following;

- The district administration level through the District Management Team (DMT) which should meet on regular basis to receive progressive implementation reports from the relevant programme managers.
- At the Sectoral Level wherein the various divisions such as health and education, project managers/co-ordinators should also conduct constant assessment and reporting of implementation work that are being carried out by their respective sectors
- At the LLG level through the Ward Councillors and their respective Ward Development Committees to ensure they are fully co-operating and participating in the implementation of the project plan.
- And fourthly through the Joint District Planning and Budget Priorities Committee, through its own established monitoring mechanisms at the district level.

6.2 Evaluation

- Evaluation should be done at three stages or point in time to determine if the this project
- plan has been fully implemented and its goals an mission achieved.
- Regular Progressive assessment
 - Annual assessment at the end of each year of implementation is necessary in
 - order to develop the annual work programmes for the following year.

- c. As part of the monitoring process when each sector and the LLGs are required to assess and provide regular reports as feedback on the progress of work performed to implement the various stages of the scheduled activities under each sector
 - d. Regular review can also take place through the existing documentary processes which include the following;
 - iv) District Annual Reports,
 - v) District Finance Reports and Annual Budget Implementation Reports.
 - vi) District Quarterly Reports.
 - vii) District & LLG Annual Planning Guides.
 - viii) District Annual Activity Plans.
 - ix) AIG Gender Checklist through the M&E Framework.
 - x) Project Completion Reports
 - a. Completion Reports of each major activity scheduled under each sector must be made available by the functional, divisional heads and LLG managers. The regularity of such reports are twofold; (a) upon completion of each major activity, or (b) on half-yearly and annual basis.
 - xi) Impact Assessment
 - a. It may not be possible to make an impact assessment in the lives of the people within or during the five year period.
 - b. Nevertheless, some broad assessment can be done to ascertain if the projects undertaken in this project plan are beginning to make some changes to the overall image of the district, as well as on the livelihood of the people.
 - c. Such assessment is significant to the re-designing and re-development of the next project development plan as the experiences of this plan will form the basis of any changes and improvements envisage in the future plans.

6.3 Redevelopment and Redesign

- i) It is highly recommended that the redevelopment and redesigning of similar project plan for the 2018-2022 five year period be done based on a thorough evaluation of this initial Bulolo District Five Year Development Plan 2013-2017.
- ii) Such evaluation should be carried out early in the first half of the year 2017 in order to give ample time to digest and analyse the information obtained for the new plan.
- iii) The new plan (2018-2022) should be completed by October 2017 in time for inclusion of relevant components of its activities in the national budget which are normally passed in November each year. It should be the first agenda for whoever the incoming Member for Bulolo will be after the 2017 National General Elections.

